

PALACE

HOTEL &
RESTAURANT

FRAIZZOLI
1923 Milano



UNIFORMI DI QUALITÀ . QUALITY UNIFORMS

PALACE

HOTEL & RESTAURANT

ACCOGLIERE

RECEIVE

4

GOVERNARE

GOVERN

12

SERVIRE

SERVE

16

CREARE

CREATE

20

COCCOLARE

CUDDLE

28

UN GRANDE ALBERGO DEVE ESSERE COME UNA "CASA LONTANO DA CASA", IN CUI TROVARE SERVIZI DI ALTO LIVELLO ACCOMPAGNATI DAL CALORE, DALL'INTIMITÀ E DAI DETTAGLI CHE SOLO LA PROPRIA ABITAZIONE PUÒ OFFRIRE.

'Un giorno Cicerone e Pompeo riuscirono a farsi ospitare a casa di Lucullo, noto in tutta Roma per i suoi famosi banchetti, ma gli proibirono di farne parola con i suoi cuochi. Erano curiosi di conoscere come mangiasse il loro anfitrione quando si trovava da solo. Ma Lucullo li lasciò di stucco: ordinò che i suoi servi gli imbastissero la tavola nella stanza di Apollo e, poiché gli schiavi già sapevano a quale tipo di cibo fossero adibite le varie sale da pranzo Cicerone e Pompeo mangiarono le più squisite di tutte le pietanze.'

COME LA DIMORA DI LUCULLO, ANCHE OGGI I GRANDI ALBERGHI DEVONO PROPORRE AI LORO OSPITI STANDARD ELEVATI DI OSPITALITÀ: NEL SERVIZIO, NEL CIBO E NELL'ATMOSFERA PER OFFRIRE IL MASSIMO DEL COMFORT ALLA PROPRIA CLIENTELA. MA L'ECCELLENZA DI UN GRANDE ALBERGO PASSA ANCHE ATTRAVERSO L'ABBIGLIAMENTO DEI PROPRI COLLABORATORI. UNA DIVISA REALIZZATA CON I MIGLIORI TESSUTI, DI OTTIMA FATTURA E PERFETTAMENTE STIRATA È IL PRIMO BIGLIETTO DA VISTA E FA PARTE DI QUELLA CULTURA DEL BELLO E DEL BEN FATTO CHE SA FARE LA DIFFERENZA DI UN GRANDE ALBERGO E RENDERLO UNICO.

A GREAT HOTEL SHOULD BE LIKE A "HOME AWAY FROM HOME", WHERE TO FIND HIGH-VALUE SERVICES, ACCOMPANIED BY THE WARMTH AND INTIMACY IN THE DETAILS THAT ONLY YOUR HOME CAN OFFER.

'One-day Cicero and Pompeo were able to be accommodated at home by Lucullus, known throughout Rome for its famous banquet, but prohibited him from saying a word with his cooks. They were curious to know how their host used to eat when he was just alone. Lucullus leave them stunned: he ordered his servants to set the table in the Apollo's room and, because the slaves already knew what kind of food the different dining rooms were prepared for, Cicero and Pompeo ate the most delicious dishes.'

AS THE HOME OF LUCULLUS, TODAY EVEN THE LUXURY HOTELS HAVE TO OFFER THEIR GUESTS HIGH STANDARDS OF HOSPITALITY: SERVICE, FOOD AND ATMOSPHERE.

THE EXCELLENCE OF A GREAT HOTEL ALSO PASSES THROUGH THE CLOTHING OF ITS EMPLOYEES.

A UNIFORM MADE FROM THE FINEST FABRICS, WELL-MADE AND PERFECTLY IRONED IS THE FIRST SIGN, AND IS PART OF THE CULTURE OF BEAUTY AND WELL-KNOWN THAT MAKE A LUXURY HOTEL UNIQUE.



ACCOGLIERE





Blu
Blue
B0005

Bluette
Light Blue
B0017

Bordeaux
Bordeaux
R0026

Grigio
Grey
G0043

Bianco
White
W0009

Nero
Black
N0004



DOORMAN

PARADISUS

Giacca uomo doppiopetto con abbottonatura a V.
Double-breasted jacket with V-shaped buttoning.

FZEM010541

L0114 - Fresco lana, 100% lana
W0009, B0017, R0026

COLONIAL

Giacca uomo 5 bottoni con collo coreana.
5 buttons jacket with mandarin collar.

FZEM010540

L0114 - Fresco lana, 100% lana
W0009, B0017, G0043



PELLICANO

Cappotto uomo doppiopetto con mantellina.
Double-breasted coat with cape.

FZEM100542

L0705 - Panno, 80% lana 20% alpaca
N0004, B0005

PLAYA

Cappotto uomo doppiopetto con abbottonatura V.
Double-breasted coat with V-shaped buttoning.

FZEM100544

L0705 - Panno, 80% lana 20% alpaca
N0004, B0005

BRISAS

Cappotto stiffeius uomo.
Stiffelius coat.

FZEM100543

L0501 - Granitè, 100% lana
N0004, B0005

A RICHIESTA

Cordellina da parata.
Official lanyard.

FZ2U220692

X1500 - Filato metallico,
100% inox
Y0046

HUBERTUS >

Redingote uomo 1 petto.
Single-breasted redingote.

FZEM100546

L0501 - Granitè, 100% lana
N0004, G0001





Nero
Black
N0004

Grigio Scuro
Dark Grey
G0001

Blu
Blue
B0005

Bianco
White
W0009

RECEPTION

BLAU

Giacca tight 1 petto.
Single-breasted tight jacket.

FZEM100545

L0114 - Fresco lana, 100% lana
N0004, G0001



PARADISO

Giacca donna 3 bottoni.
3 buttons jacket.

FZEW010564

L0114 - Fresco lana, 100% lana
N0004, B0005, G0001, M0007

L0151 - Sallia rigata, 100% lana
B0055, G0056



SABISABI

Giacca uomo 2 bottoni.
2 buttons jacket.

FZEM010553

L0114 - Fresco lana, 100% lana
N0004, B0005, G0001, M0007

L0151 - Sallia rigata, 100% lana
B0055, G0056



OBEROI >

Giacca uomo 3 bottoni.
3 buttons jacket.

FZEM010554

L0114 - Fresco lana, 100% lana
N0004, B0005, G0001, M0007

L0151 - Sallia rigata, 100% lana
B0055, G0056



Marrone
Brown
M0007

Gessato Grigio
Pinstripe Grey
G0056

Gessato Blu
Pinstripe Blue
B0055

Grigio Chiaro
Light Grey
G0012

Grigio Medio Rigato
Medium Striped Grey
G0013



ALEXANDRA

Giacca donna 5 bottoni
con pettorina a contrasto.
5 buttons jacket with bib.

FZEW010565

L0114 - Fresco lana, 100% lana
N0004, B0005, G0001, M0007

L0151 - Sallia rigata, 100% lana
B0055, G0056

~ panciotti ~

WAISTCOAT

1 POST Panciotto uomo 3 bottoni / 3 buttons waistcoat - **FZEM090548: C0822** - Nido d'ape, 100% cotone - W0009. **C0861** - Piquet, 100% cotone - W0009. **2 KAPRUN** Panciotto uomo 3 bottoni con collo a scialle / 3 buttons waistcoat with shawl collar - **FZEM090549: C0822** - Nido d'ape, 100% cotone - W0009. **C0861** - Piquet, 100% cotone - W0009. **3 LODGE** Panciotto uomo 4 bottoni con elastico / 4 buttons waistcoat with elastic band on the back - **FZEM090559: L0114** - Fresco lana, 100% lana - G0001, N0004, B0005, M0007, G0012. **L0151** - Sallia rigata, 100% lana - B0055, G0056. **4 TAY** Panciotto donna 4 bottoni / 4 buttons waistcoat - **FZEW090560: L0114** - Fresco lana, 100% lana - G0001, N0004, B0005, M0007, G0012. **L0151** - Sallia rigata, 100% lana - B0055, G0056.





BRISTOL

Giacca uomo 3 bottoni.
3 buttons jacket.

FZEM010552

L0114 - Fresco lana, 100% lana
N0004, B0005,
G0001, M0007

L0151 - Sallia rigata, 100% lana
B0055, G0056

MARINA

Giacca donna 3 bottoni con spacco.
3 buttons jacket with back vent.

FZEW010555

L0114 - Fresco lana, 100% lana
N0004, B0005,
G0001, M0007

L0151 - Sallia rigata, 100% lana
B0055, G0056

~ pantalone ~

TROUSERS



PEN

Pantalone uomo 1 pince.
Trousers with one pince.

FZ2M020053

L0114 - Fresco lana, 100% lana
N0004, B0005, G0001

L0501 - Granitè, 100% lana
N0004, B0005, G0001

L0151 - Sallia rigata, 100% lana
B0055, G0056

L0147 - Fresco lana rigato, 100% lana
G0013



RIO

Giacca uomo 1 petto
2 bottoni con collo a lancia.
2 buttons jacket with peak collar.

FZEM010562

L0114 - Fresco lana, 100% lana
N0004, B0005, G0001, M0007

L0151 - Sallia rigata, 100% lana
B0055, G0056

BONAPARTE

Giacca uomo 1 petto
2 bottoni.
2 buttons jacket.

FZEM010561

L0114 - Fresco lana, 100% lana
N0004, B0005, G0001, M0007

L0151 - Sallia rigata, 100% lana
B0055, G0056

RESIDENCIA

Giacca donna 2 bottoni
con tasca con aletta.
2 buttons jacket with flap pockets.

FZEW010563

L0114 - Fresco lana, 100% lana
N0004, B0005, G0001, M0007

L0151 - Sallia rigata, 100% lana
B0055, G0056

AREA MANAGER



SINGITA

Giacca donna
1 bottone.
1 button jacket.

FZEWO10556

L0114 - Fresco lana, 100% lana
N0004, B0005, G0001, M0007

L0151 - Sallia rigata, 100% lana
B0055, G0056

NAYARA

Giacca donna 3 bottoni.
3 buttons jacket.

FZEWO10557

L0114 - Fresco lana, 100% lana
N0004, B0005, G0001, M0007

L0151 - Sallia rigata, 100% lana
B0055, G0056



BOOKING

~ giacche ~

JACKETS



1 EDEN Giacca donna decostruita 3 bottoni con tasca con aletta / *3 buttons deconstructed jacket with flap pockets* - **FZEW010595 P0855** - Gabardine, 100% poliestere - **B0005**. **2 AMANTARA** Giacca donna 5 bottoni con collo coreana / *5 buttons jacket with mandarin collar* - **FZEW010558: L0114*** - G0001, N0004, B0005. **L0151*** - B0055, G0056. **3 MADELEINE** Giacca donna 2 bottoni con spacco e tasca con aletta / *2 buttons jacket with back vent and flap pockets* - **FZEW010566: L0114*** - G0001, N0004, B0005, M0007. **L0151*** - B0055, G0056. **4 AMBASSADE** Giacca donna con 4 profili tasche a contrasto / *Women jacket with 4 piping pocket* - **FZEW010567: L0114*** - N0004, B0005. **L0151*** - B0055, G0056. **5 MERCER** Giacca donna 2 bottoni / *2 buttons jacket* - **FZEW010572: L0114*** - G0001, N0004, B0005, M0007. **L0140*** - N0004, G0001, B0005, M0007. **L0151*** - B0055, G0056. **6 FLYING** Giacca donna con manica a sbuffo / *Women jacket with puffed sleeves* - **FZEW010568: L0114*** - G0001, N0004, B0005. **L0151*** - B0055, G0056.

*** Tessuti disponibili / available fabrics:**

L0114 - Fresco lana, 100% lana. **L0151** - Sallia rigata, 100% lana. **L0140** - Sallietta, 100% lana.



~ abiti ~

DRESSES



MAXIM >
Abitino donna manica 3/4.
3/4 sleeved dress.

FZEW050570*

*** Tessuti disponibili.**
Available fabrics:

L0114 - Fresco lana, 100% lana
N0004, G0001, B0005, M0007

L0140 - Sallietta, 100% lana
N0004, G0001, B0005, M0007

L0151 - Sallia rigata, 100% lana
B0005, G0056

KATERINA
Abitino donna senza maniche.
Sleeveless dress.

FZEW050574*

AQUAMARINE
Abitino donna manica corta.
Short sleeved dress.

FZEW050573*

~ gonne e pantaloni ~

SKIRT AND TROUSERS



1 TUBINO Gonna / Skirt - **FZ2W040052: L0114** - Fresco lana, 100% lana - G0001, N0004, B0005. **L0147** - Fresco lana rigato, 100% lana - G0013. **L0151** - Sallia rigata, 100% lana - B0055, G0056. **2 CENTRAL** Pantalone donna con cerniera centrale / Trousers with central zip - **FZ2W020081: L0114** - Fresco lana, 100% lana - N0004, W00019, M0007. **L0401** - Fresco lana 8000, 100% lana - N0004, W00019, M0007. **3 CHRISTAL** Pantalone donna con cerniera centrale / Women trousers with central zip - **FZEW020347: L0114** - Fresco lana, 100% lana - N0004, G0001, B0005, M0007. **L0140** - Sallietta, 100% lana - N0004, G0001, B0005, M0007. **L0151** - Sallia rigata, 100% lana - B0055, G0056.

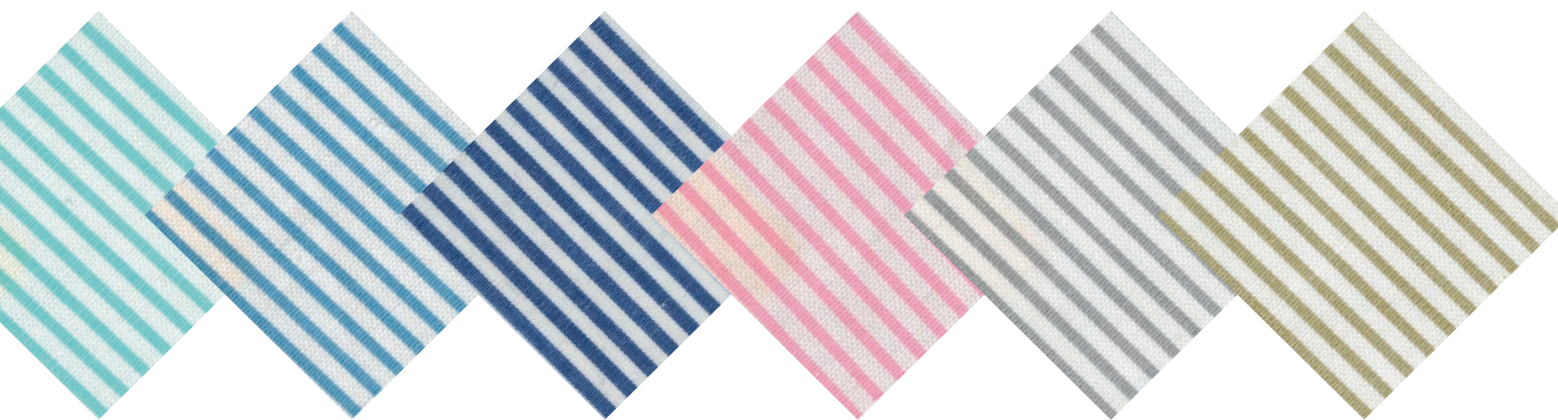


GOVERNARE

GOVERN



HOUSE KEEPING



Bianco Verde
White Green
WV062

Bianco Azzurro
White Light Blue
WZ061

Bianco Blu
White Light Blue
WB060

Bianco Rosa
White Rose
WP063

Bianco Grigio
White Grey
WG066

Bianco Noisette
White Noisette
WM067

MILLENIUM

Grembiule donna manica corta.
Short sleeved overall.

FZEW160510

C0831 - Rigato, 100% cotone
WV062, WZ061, WB060,
WP063, WG066

C0834 - Piquet rigato, 100% cotone
WV062, WZ061, WB060,
WP063, WM067



REGENT

Grembiule donna manica corta.
Short sleeved overall.

FZEW160512

P0836 - Popeline,
65% poliestere 35% cotone
G0041, N0004, B0005, R0025,
M0036, V0030

FAIRMONT

Grembiule donna manica corta
con 2 tasche.
Short sleeved overall
with 2 pockets.

FZEW160511

P0836 - Popeline,
65% poliestere
35% cotone
G0041, N0004, B0005,
R0025, M0036, V0030

MARGOT

Grembiule donna manica 3/4.
3/4 sleeved overall.

FZEW160513

P0836 - Popeline,
65% poliestere 35% cotone
G0041, N0004, B0005, R0025,
M0036, V0030

>
HOUSE
KEEPING



PARK

Grebiule donna manica corta con sfondo piega.
Short sleeved overall with kick pleat.

FZEW160519

C0831 - Rigato, 100% cotone
WV062, WZ061, WB060,
WP063, WM066

C0834 - Piquet rigato, 100% cotone
WV062, WZ061, WB060,
WP063, WM067, WN059



PUPP

Grebiule donna manica corta collo coreana.
Short sleeved overall with mandarin collar.

FZEW160520

C0831 - Rigato, 100% cotone
WV062, WZ061, WB060,
WP063, WM066

C0834 - Piquet rigato, 100% cotone
WV062, WZ061, WB060,
WP063, WM067, WN059



SAUDY

Grebiule donna manica corta doppio petto.
Double-breasted short sleeved overall.

FZEW160521

P0836 - Popeline,
65% poliestere 35% cotone
G0041, N0004, B0005,
R0025, M0036, V0030



MIRAMONTI

Grebiule donna maniche corte con aletta e tre tasche.
Short sleeved overall with 3 pockets.

FZEW160346

C0831 - Rigato, 100% cotone
WV062, WZ061, WB060,
WP063, WM066

C0834 - Piquet rigato, 100% cotone
WV062, WZ061, WB060,
WP063, WM067, WN059



MAGNOLIA'S

Grebiule donna manica lunga.
Long sleeved overall.

FZEW160514

P0836 - Popeline,
65% poliestere 35% cotone
G0041, N0004, B0005,
R0025, M0036, V0030



MOUNTAIN

Grebiule donna manica corta bordata.
Short sleeved overall.

FZEW160517

C0831 - Rigato, 100% cotone
WV062, WZ061, WB060,
WP063, WM066

C0834 - Piquet rigato, 100% cotone
WV062, WZ061, WB060,
WP063, WM067, WN059



CORONADO

Grebiule donna manica corta scollo quadrato.
Short sleeved overall with square collar.

FZEW160518

C0831 - Rigato, 100% cotone
WV062, WZ061, WB060,
WP063, WM066

C0834 - Piquet rigato, 100% cotone
WV062, WZ061, WB060,
WP063, WM067, WN059



TIMBERLINE

Grebiule donna corto manica 3/4.
3/4 sleeved short overall.

FZEW160516

C0831 - Rigato, 100% cotone
WV062, WZ061, WB060,
WP063, WM066

C0834 - Piquet rigato, 100% cotone
WV062, WZ061, WB060,
WP063, WM067, WN059

~ *grembiulini a vita* ~

APRONS



1 SCALINATELLA Grembiulino a vita / Apron - **FZEW160522 C0852** - Tela, 100% cotone - **W0009**. **2 MIRAMARE** Grembiulino a vita con profilo / Apron with trimmings - **FZEW160524 C0852** - Tela, 100% cotone - **W0009**. **3 FOUNTAIN BLEU** Grembiulino a vita / Apron - **FZEW160526 C0060** - Pizzo sangallo, 100% cotone - **W0009**. **4 QUISISANA** Grembiulino a vita / Apron - **FZEW160523 C0061** - Pizzo sangallo, 100% cotone - **W0009**. **5 SPLENDIDO** Grembiule con pettorina / Bibbed apron - **FZEW160525 C0852** - Tela, 100% cotone - **W0009**. **6 MAJESTIC** Grembiule con pettorina / Bibbed apron with trimmings - **FZEW160527 C0852** - Tela, 100% cotone - **W0009**.



SERVIRE

SERVE





MAITRE



AUDITORIUM

Giacca smoking uomo 1 petto con collo a scialle.
Single-breasted smoking jacket with shawl collar.

FZEM010576

L0114 - Fresco lana, 100% lana
N0004



COVENT GARDEN

Giacca smoking uomo 1 petto con collo a lancia.
Single-breasted smoking jacket with peak collar.

FZEM010575

L0114 - Fresco lana, 100% lana
N0004



BALTIMORE

Giacca smoking donna 1 petto con collo a scialle.
Single-breasted smoking jacket with shawl collar.

FZEW010577

L0114 - Fresco lana, 100% lana
N0004



MASSIMO >

Giacca smoking donna 1 petto con collo a lancia.
Single-breasted smoking jacket with peak collar.

FZEW010578

L0114 - Fresco lana, 100% lana
N0004



CHEF DE RANG



AVENTURA

Giubbetto donna 1 bottone
con collo a lancia.
Single-breasted jacket with peak collar.

FZEW010585

L0114 - Fresco lana, 100% lana
W0019, M0007, N0004

PARAMOUNT

Giubbetto uomo 1 bottone
con collo a lancia.
Single-breasted jacket with peak collar.

FZEM010580

L0114 - Fresco lana, 100% lana
W0019, M0007, N0004



ROMANTIK

Giubbotto donna 1 bottone gemello.
Jacket with one cufflink button.

FZEW010586

L0114 - Fresco lana, 100% lana
W0019, M0007, N0004

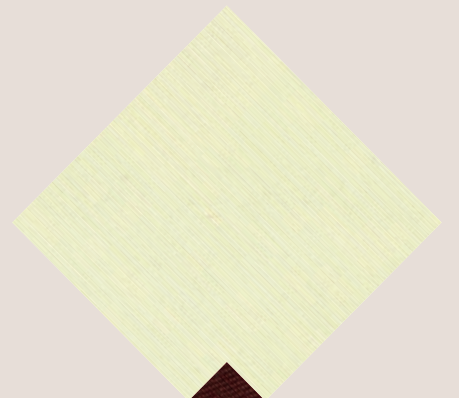
COSMOS

Giacca uomo 1 bottone.
1 button jacket.

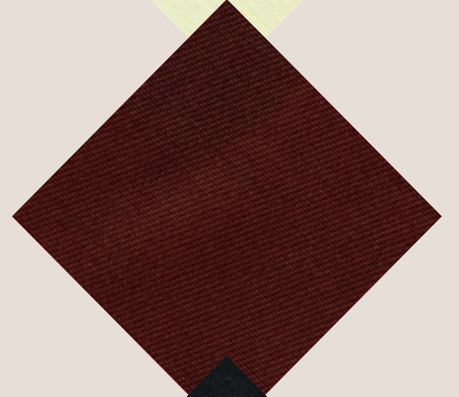
FZEM010571

L0114 - Fresco lana, 100% lana
W0019

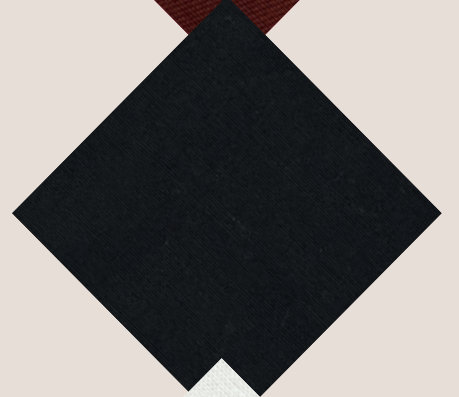
Panna
Cream
W0019



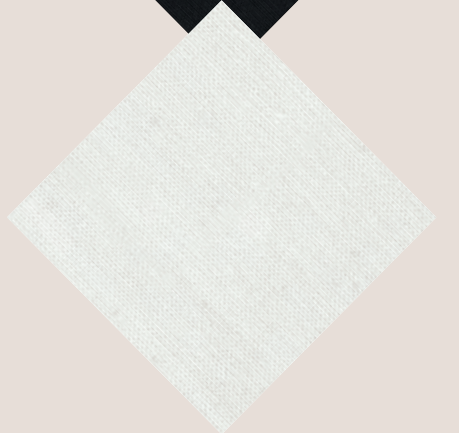
Marrone
Brown
M0007



Nero
Black
N0004



Bianco
White
W0009



AUGUSTIN

Giacca uomo 1 bottone con collo a scialle.
1 button jacket with shawl collar.

FZEM010590

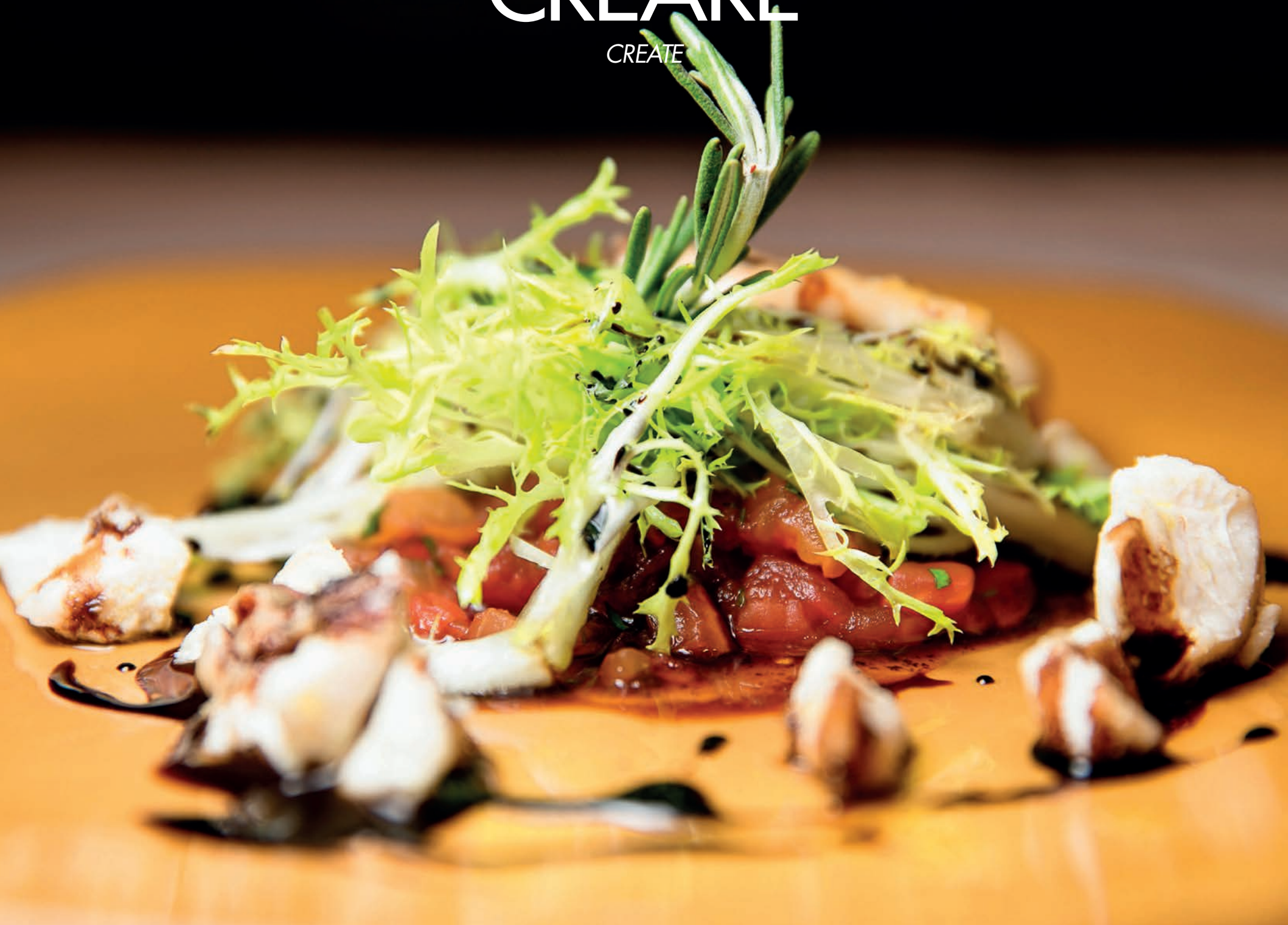
P0855 - Gabardine, 100% poliestere
W0019, N0004





CREARE

CREATE



1° CHEF



Tasca sulla manica / Pocket on sleeve.

Dettaglio inserto rete / Mesh detail.

EMPIRE

Giacca cuoco unisex.
Unisex chef jacket.

FZEU080500

C0914 - Rasatello, 100% cotone
W0009, N0004

P0204 - Gabardine,
65% poliestere 35% cotone
W0009, N0004



RAFFLES

Giacca cuoco uomo manica 3/4.
3/4 sleeved chef jacket.

FZEM080499

C0914 - Rasatello, 100% cotone
W0009, N0004

P0204 - Gabardine,
65% poliestere 35% cotone
W0009, N0004

RITZ

Giacca cuoco uomo manica lunga.
Long sleeved chef jacket.

FZEM080501

C0914 - Rasatello, 100% cotone
W0009, N0004

P0204 - Gabardine,
65% poliestere 35% cotone
W0009, N0004

MARITIME

Giacca cuoco uomo manica lunga
con bottoni staccabili.
*Long sleeved chef jacket
with detachable buttons.*

FZEM080503

C0914 - Rasatello, 100% cotone
W0009, N0004

P0204 - Gabardine,
65% poliestere 35% cotone
W0009, N0004



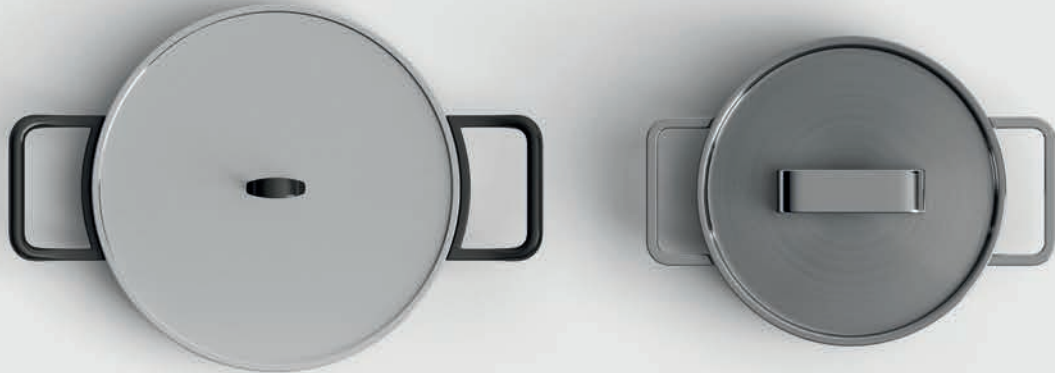


ACCESSORI

CHEF

1 BUDDAKAN Cappello cuoco con velcro / *Chef hat* - **FZEU190534: C0852** - Tela, 100% cotone - **W0009. P0204** - Gabardine, 65% poliestere 35% cotone - **N0004. C0812** - Rigato, 100% cotone - **WN059. C0806** - Pied de Poulle, 100% cotone - **WN059. 2 FLATIRON** Cappello cuoco con profilo / *Chef hat with border in different color* - **FZEU190535: C0852** - Tela, 100% cotone - **W0009. P0204** - Gabardine, 65% poliestere 35% cotone - **N0004. 3 PULLMAN** Torcione / *Dish cloths* - **FZEU220539 C1737** - 100% cotone - **W0009. 4 DANIEL** Fazzoletto cuoco / *Chef handkerchief* - **FZEU220538: C0852** - Tela, 100% cotone - **W0009. P0204** - Gabardine, 65% poliestere 35% cotone - **W0009, M0007, R0025, M0036. C0812** - Rigato, 100% cotone - **WN059. 5 CORONA** Bustina / *Chef side cap* - **FZEU190378 C0852** - Tela, 100% cotone - **W0009.**

S●OUS CHEF



~ pantaloni ~

TROUSERS



1 REGINA Pantalone con elastico / *Pants with elastic band waist* - **FZEU020508***. **2 URBAN** Pantalone con elastico laterale sui fianchi / *Pants with side elastic tape* - **FZEU020509***.

*** Tessuti disponibili / available fabrics:**

- C0914** - Rasatello, 100% cotone - W0009.
- P0204** - Gabardine, 65% poliestere 35% cotone - N0004.
- C0812** - Rigato, 100% cotone - WN059.
- C0806** - Pied de Poulle, 100% cotone - WN059, WV062, WB060.



COPACABANA

Giacca cuoco uomo manica 3/4 con profili a contrasto.
3/4 sleeved chef jacket with borders in different color.

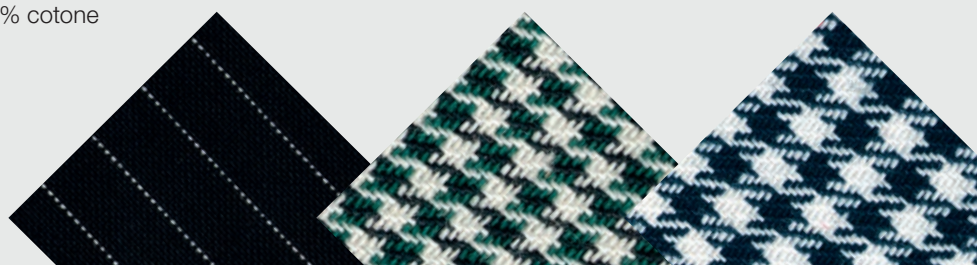
FZEM080498

- C0914** - Rasatello, 100% cotone W0009, N0004
- P0204** - Gabardine, 65% poliestere 35% cotone W0009, N0004

Bianco-Nero
White-Black
WN059

Bianco-Verde
White-Green
WV062

Bianco-Blu
White-Blue
WB060



CAPO PARTITA



ATLANTIS

Giacca cuoco donna manica 3/4.
3/4 sleeved chef jacket.

FZEW080502

C0914 - Rasatello, 100% cotone
W0009, N0004

P0204 - Gabardine,
65% poliestere 35% cotone
W0009, N0004

PENINSULA

Giacca cuoco donna manica lunga
con bottoni staccabili.
*Long sleeved chef jacket
with detachable buttons.*

FZEW080504

C0914 - Rasatello, 100% cotone
W0009, N0004

P0204 - Gabardine,
65% poliestere 35% cotone
W0009, N0004

~ accessori ~

ACCESORIES



RIVER

Bandana
Bandana.

FZEU190537

C1736 - Cotone stampato,
100% cotone.

W0009, N0004, B0005,
M0007, R0003, P0011



DE LA VILLE

Berretto rete.
Cap.

FZEU190374

C0852 - Tela, 100% cotone
W0009



COSMOPOLITAN

Coppola.
Flat cap.

FZEU190536

C0852 - Tela, 100% cotone
W0009

P0204 - Gabardine, 65% poliestere
35% cotone
N0004, M0007, R0025, M0036

C0812 - Rigato, 100% cotone.
WN059

C0806 - Pied de Poule, 100% cotone.
WN059

Panna
Cream
W0019

Marrone
Brown
M0007

Nero
Black
N0004

COMMIS



EQUIPE

Giubbotto donna
1 bottone gemello con collo a lancia.
*Jacket with one cufflink button
and peak collar.*

FZEW010593

P0855 - Gabardine, 100% poliestere
N0004, W0019

REFINERY

Giubbotto uomo
1 bottone gemello e 6 laterali.
*Jacket with one cufflink button
and 6 lateral buttons.*

FZEM010581

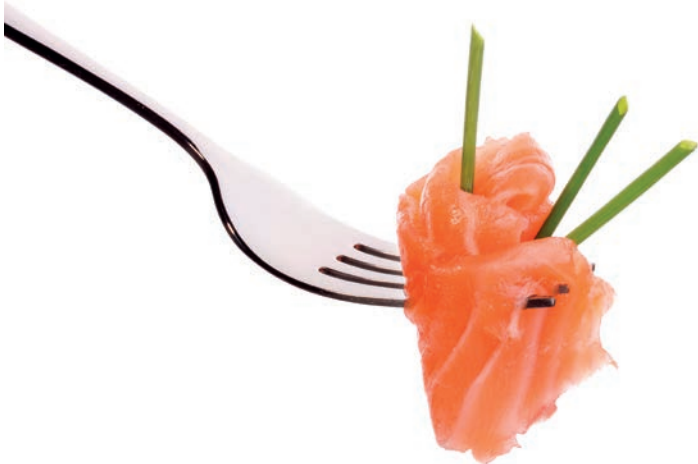
L0114 - Fresco lana, 100% lana
N0004, W0019, M0007

MONTANA

Giubbotto donna
1 bottone gemello con collo a scialle.
*Jacket with one cufflink button
and shawl collar.*

FZEW010594

P0855 - Gabardine, 100% poliestere
N0004, W0019, M0007





A RICHIESTA

- 1** Coppia di contropalline intrecciate doppie / *Braided epaulettes*
PAS00087 - Y0046.
- 2** Coppia di contropalline intrecciate / *Twisted epaulettes*
PAS00086 - Y0046.
- 3** Camicia a davantino / *Font bib*
FZ2U220690 C0861 - Piquet, 100% cotone - W0009.
- 4** Listino collo con applicazione nella giacca / *Neckband*
FZ2U220691 C0861 - Piquet, 100% cotone - W0009.



INDIGO

Giubbotto uomo 1 bottone gemello.
Jacket with one cufflink button.

FZEM010588

P0855 - Gabardine, 100% poliestere
N0004, W0019, B0015, B0051

SEBASTOPOL

Giubbotto uomo 1 bottone gemello con collo a scialle.
Jacket with one cufflink button and shawl collar.

FZEM010589

P0855 - Gabardine, 100% poliestere
N0004, W0019, B0015, B0051

MIRAGE

Giacca cameriere 4 bottoni con alamari.
4 buttons waiter jacket with frog closure.

FZEM010507

C0914 - Rasatello, 100% cotone
W0009

P0204 - Gabardine,
65% poliestere 35% cotone
N0004, R0025, G0012, V0030

CROWN

Giacca cameriere 5 bottoni.
5 buttons waiter jacket.

FZEM010505

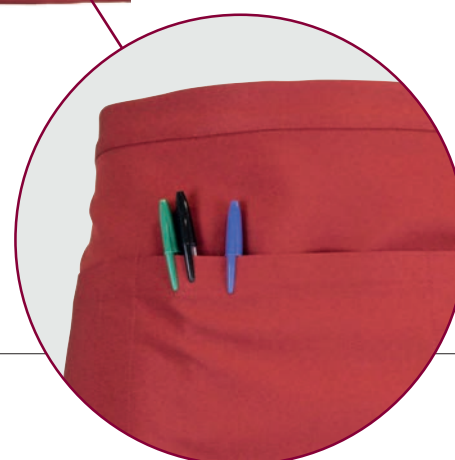
C0914 - Rasatello, 100% cotone
W0009

P0204 - Gabardine,
65% poliestere 35% cotone
B0005, M0036

~ grembiuli ~

APRONS

- 1 VICTORIA** Grembiulone con pettorina / *Bibbed long apron* - **FZEU160597 P0855** - Gabardine, 100% poliestere - N0004, M0007, R0025.
- 2 ZELEDRIA** Grembiulone con pettorina e tasca centrale / *Bibbed long apron with central pocket* - **FZEU160599: P0855** - Gabardine, 100% poliestere - N0004, M0007, R0025. **C0847** - Massaua, 100%cotone - W0009.
- 3 FOUBOURG** Grembiule alla francese / *French waist apron* - **FZEU160602 C0852** - Tela, 100% cotone - W0009. **P0855** - Gabardine, 100% poliestere - N0004, M0007, R0025.
- 4 CRISTALLO** Grembiulino corto a vita con tasca laterale / *Short apron with lateral pocket* - **FZEU160600 P0855** - Gabardine, 100% poliestere - N0004, M0007, R0025.
- 5 KULM** Grembiulino a vita con tasche / *short apron with pockets* - **FZEU160603 P0855** - Gabardine, 100% poliestere - N0004, M0007, R0025.
- 6 EXCELSIOR** Grembiule lungo a vita / *Apron* - **FZEU160601: P0855** - Gabardine, 100% poliestere - N0004, M0007, R0025. **C0852** - Tela, 100% cotone - W0009.





~ colori ~

COLORS



Panna
Cream
W0019

Nero
Black
N0004

Bianco
White
W0009

Blu Navy
Navy Blu
B0051

Bluette
Bluette
B0015



Marrone
Brown
M0007

Beige Chiaro
Light beige
M0036

Giallo Blu
Yellow Blue
YB072

Nero Azzurro
Black Blue
NZ070



Bianco Azzurro
White Light Blue
WZ061

Bianco Nero
White Black
WN059

Bianco Noisette
White Noisette
WM067

Bianco Blu
White Blue
WB060



BURI

Giacca cameriere 5 bottoni
manica corta.
5 buttons, short sleeved waiter jacket.

FZEM010506

C0914 - Rasatello, 100% cotone
W0009

C0834 - Piquet rigatino, 100% cotone
WZ061, WM067

MORGANE

Pantalone uomo con tasca
posteriore applicata.
Trousers with back pocket.

FZEM020592

P0898 - Gabardine,
65% poliestere 35% cotone
N0004

~ panciotti ~

WAISTCOAT



2



3



4



5



6



1 MANANITAS Panciotto donna 4 bottoni girocollo / 4 buttons round neck waistcoat - **FZEW090587 L0114** - Fresco lana, 100% lana - N0004.
2 BYRON Panciotto uomo 3 bottoni collo a lancia / 3 buttons waistcoat with peak collar - **FZEM090582 L0114** - Fresco lana, 100% lana - N0004. **3 MUSEUM** Panciotto sfoderato uomo 4 bottoni con 2 taschini a filetto / 4 buttons waistcoat with 2 piping pocket - **FZEM090591 P0855** - Gabardine, 100% poliestere - N0004, B0005, R0025, M0007. **4 BELLE PLAGES** Panciotto sfoderato donna 4 bottoni / 4 buttons waistcoat - **FZEW090596 P0855** - Gabardine, 100% poliestere - N0004, B0005, R0025, M0007. **5 RIVIERA** Panciotto uomo 5 bottoni / 5 buttons waistcoat - **FZEM090583 L0114** - Fresco lana, 100% lana - N0004. **6 NAZIONALE** Panciotto smoking uomo con collo a scialle / Smoking waistcoat with shawl collar - **FZEM090584 L0114** - Fresco lana, 100% lana - N0004.



COCCOLARE

CUDDLE



SPA



BELLAVISTA

Casacca donna manica corta.
Short sleeved tunic.

FZEW170531

C0914 - Rasatello, 100% cotone
W0009

P0204 - Gabardine,
65% poliestere 35% cotone
B0005, M0036



LAFAYETTE

Casacca donna manica lunga.
Long sleeved tunic.

FZEW170529

C0914 - Rasatello, 100% cotone
W0009

P0204 - Gabardine,
65% poliestere 35% cotone
N0004, M0038, Y0021

CENTAURUS

Pantalone donna.
Women trousers.

FZEW020532

C0914 - Rasatello, 100% cotone
W0009

P0204 - Gabardine,
65% poliestere 35% cotone
W0009, B0005, M0036





ROSALPINA

Grebiule donna manica corta con carrè.
Short sleeved overall with yoke.

FZEW160530

C0831 - Rigato, 100% cotone
WV062, WZ061, WP063,
WG066, WB060



CASABELLA

Casacca donna manica corta.
Short sleeved tunic.

FZEW170528

C0914 - Rasatello, 100% cotone
W0009

P0204 - Gabardine, 65% poliestere 35% cotone
N0004, M0038, Y0021



~ pantalone ~

TROUSERS



CORTE REGINA

Pantalone donna.
Women trousers.

FZEW020533

C0914 - Rasatello, 100% cotone
W0009

P0204 - Gabardine,
65% poliestere 35% cotone
N0004



FRAIZZOLI
1923 Milano



SEDE E STABILIMENTO

Via Kuliscioff, 7/A
20152 Milano - Italy
Tel +39 02 48951173
Fax +39 02 48953794
info@fraizzoli.it
www.fraizzoli.it

SHOWROOM

Via Kuliscioff, 7/A
20152 Milano - Italy
Tel +39 02 48951173



~ tessuti ~

FABRICS

C0061

Pizzo sangallo, 100% cotone
Sangallo Lace

C0806

Pied de Poulle, 100% cotone
Pied de Poulle

C0812

Rigato, 100% cotone
Striped cotton

C0822

Fresco lana rigato, 100% lana
Striped worsted light wool

C0831

Rigato, 100% cotone
Striped cotton

C0834

Piquet rigato, 100% cotone
Striped piquet

C0847

Massaua, 100% cotone
Massaua

C0852

Tela, 100% cotone
Cotton canvas

C0861

Piquet, 100% cotone
Piquet

C0914

Rasatello, 100% cotone
Sateen

C1736

Cotone stampato, 100% cotone
Printed cotton

L0114

Fresco lana, 100% lana
Worsted light wool

L0140

Sallietta, 100% lana
Wool

L0147

Piquet, 100% cotone
Piquet

L0151

Sallia rigata, 100% lana
Striped wool

L0401

Fresco lana 800, 100% lana
800 worsted light wool

L0501

Granitè, 100% lana
Wool

L0705

Panno, 80% lana 20% alpaca
Coat fabric

P0836

Popeline, 65% poliestere
35% cotone
Poplin

P0204

Gabardine, 65% poliestere
35% cotone
Gabardine

PALACE

HOTEL &
RESTAURANT

FRAIZZOLI
1923 Milano



UNIFORMI DI QUALITÀ . QUALITY UNIFORMS