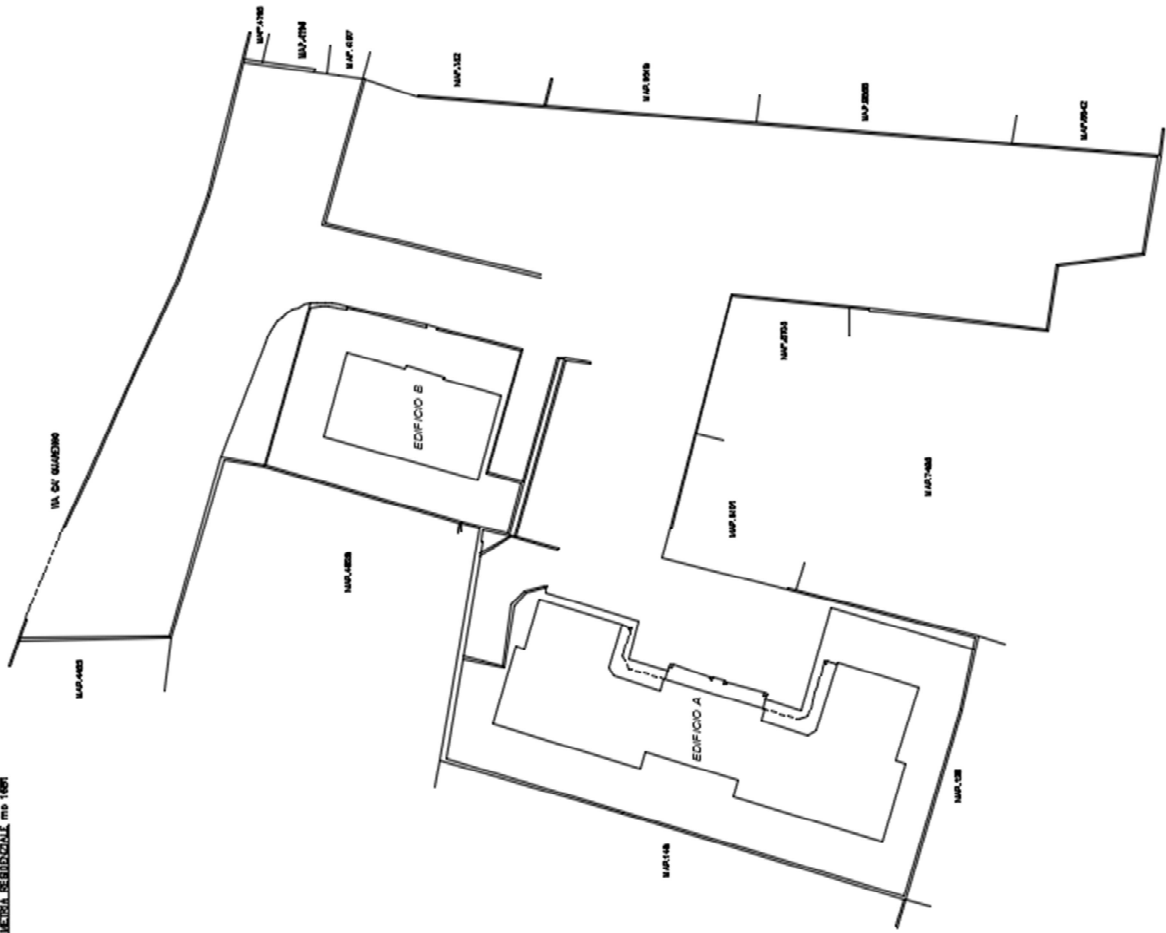




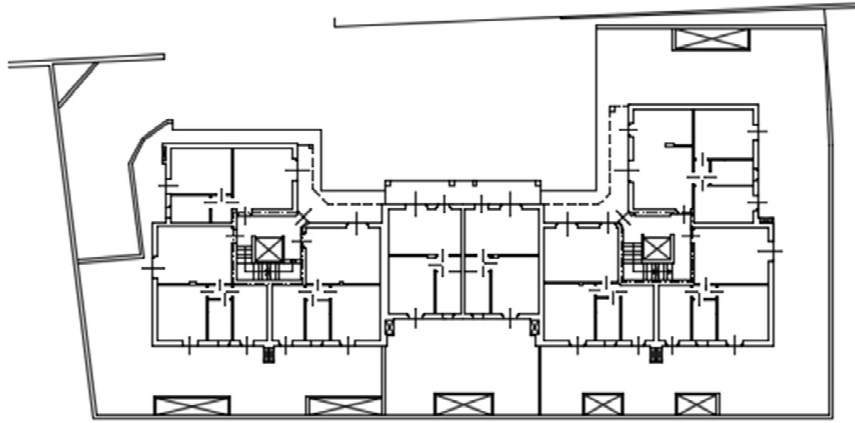
SEDIA VOLUMETRIA RESIDENZIALE m<sup>2</sup> 1497



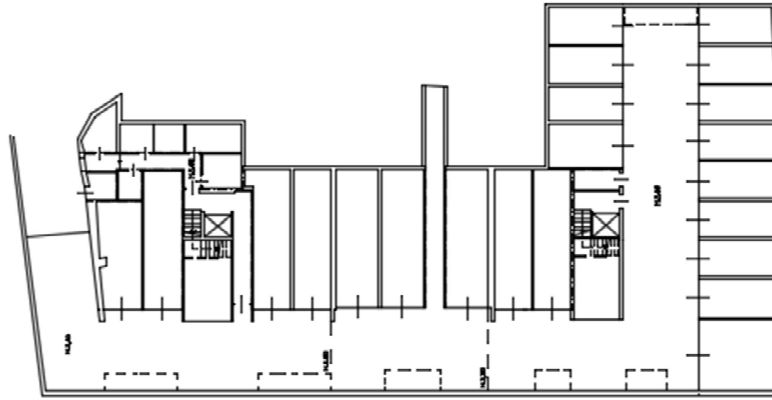
PLANIMETRIA



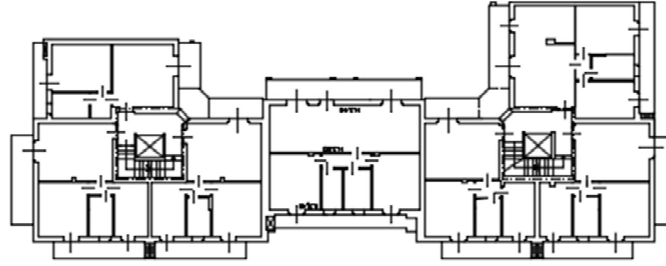
**SUPERFICIE LORDA**  
 APPARTAMENTI P. T. mq 400,00  
 APPARTAMENTI P. 1 mq 400,00  
 BALCONI P. 1 mq 115,50  
 APPARTAMENTI P. 2 mq 201,20  
 BALCONI P. 2 mq 20,70  
 CANTINE P. INT. mq 42,20  
 AUTORIMESSE P. INT. mq 504,00



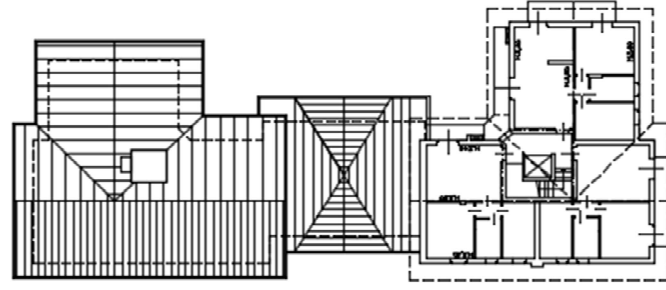
PIANO TERRA  
 H. 2,70 (finito)



PIANO INTERRATO



PIANO PRIMO  
 H. 2,70 (finito)



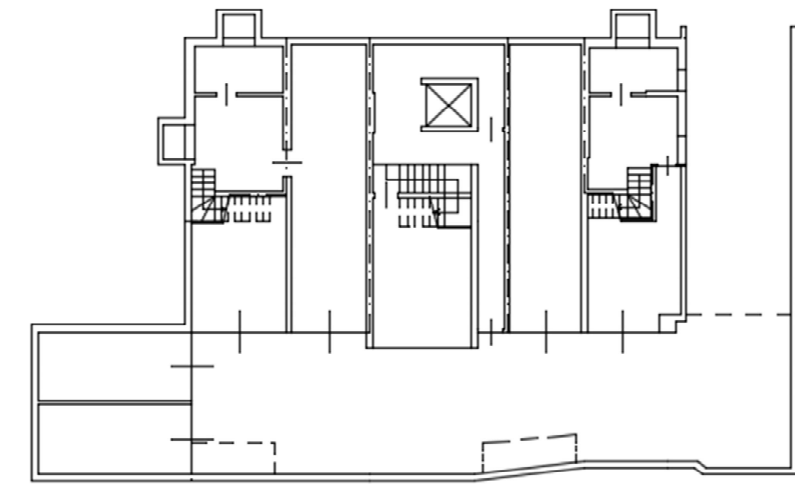
PIANO SECONDO

**EDIFICIO A**  
**PIANTE P. INT. - T. - 1 - 2**

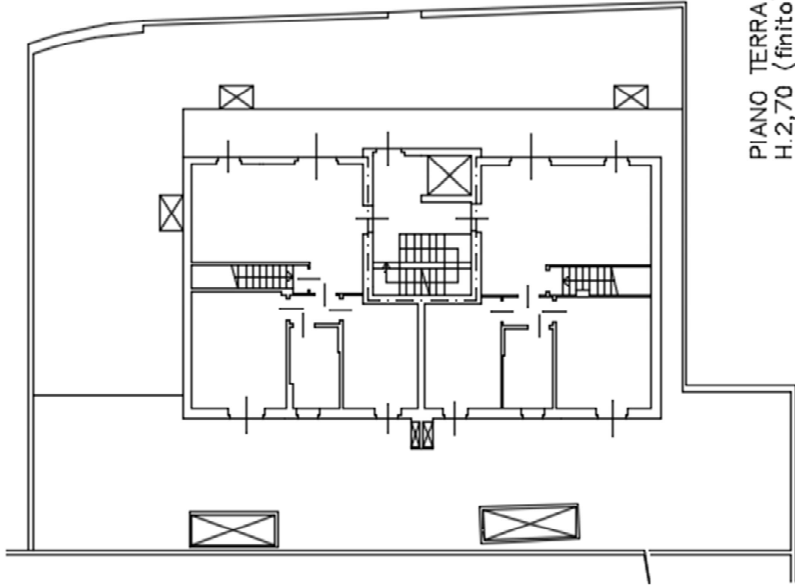




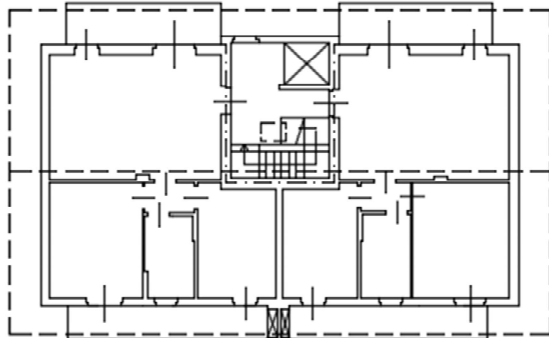
**SUPERFICIE LORDA**  
APPARTAMENTI P. T. mq 145,00  
APPARTAMENTI P. I. mq 145,00  
BALCONI P. I. mq 33,80  
ACCESSORI P. INT. mq 43,50  
AUTORIMESSE P. INT. mq 130,50



PIANO INTERRATO  
H.2,40 (finito)



PIANO TERRA  
H.2,70 (finito)



PIANO PRIMO  
H.2,70 (finito)

**EDIFICIO B**  
PIANTE P.INT.-T.-I

