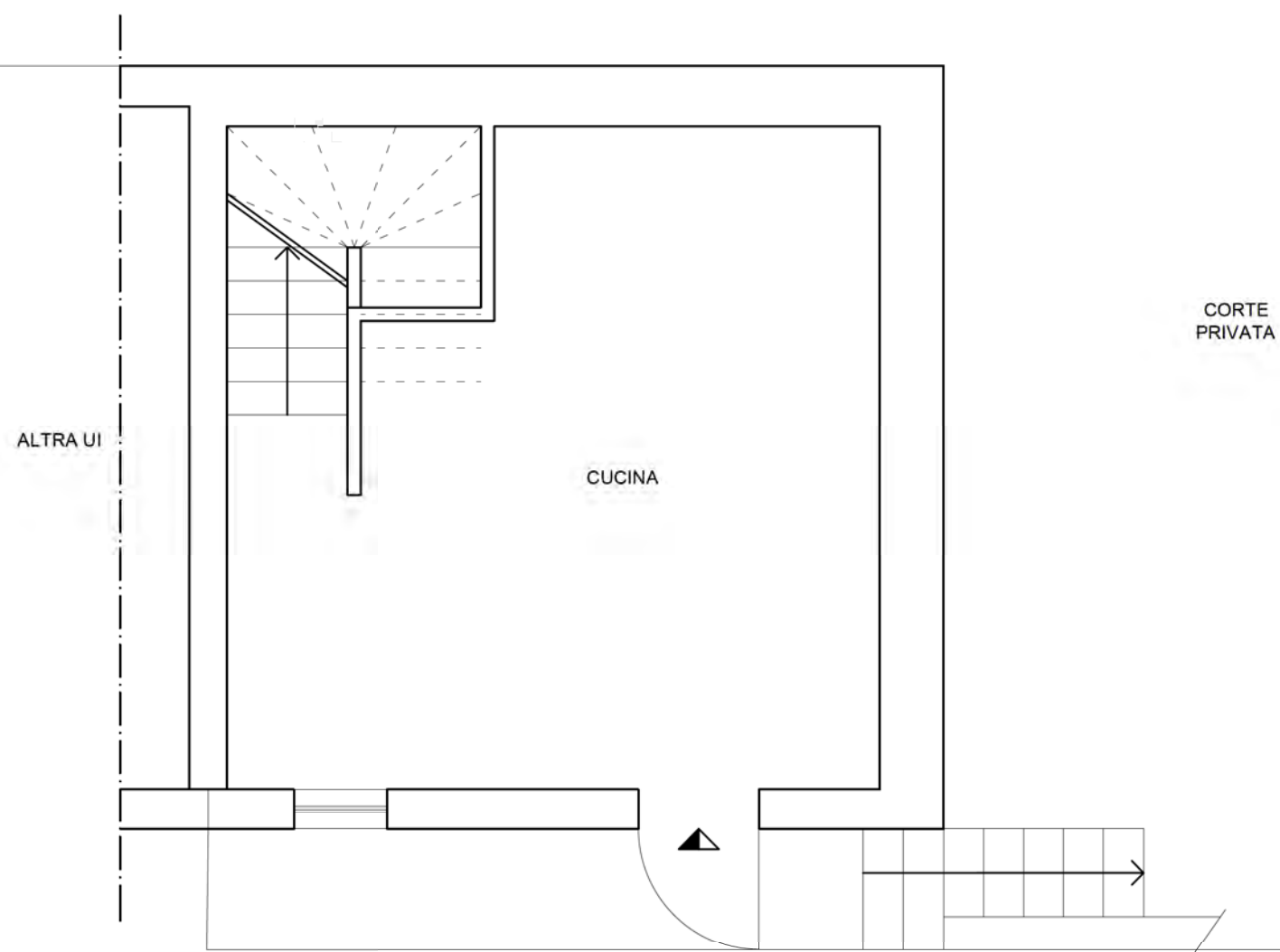
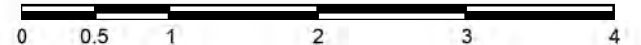


PIANO SEMINTERRATO - H 238 cm

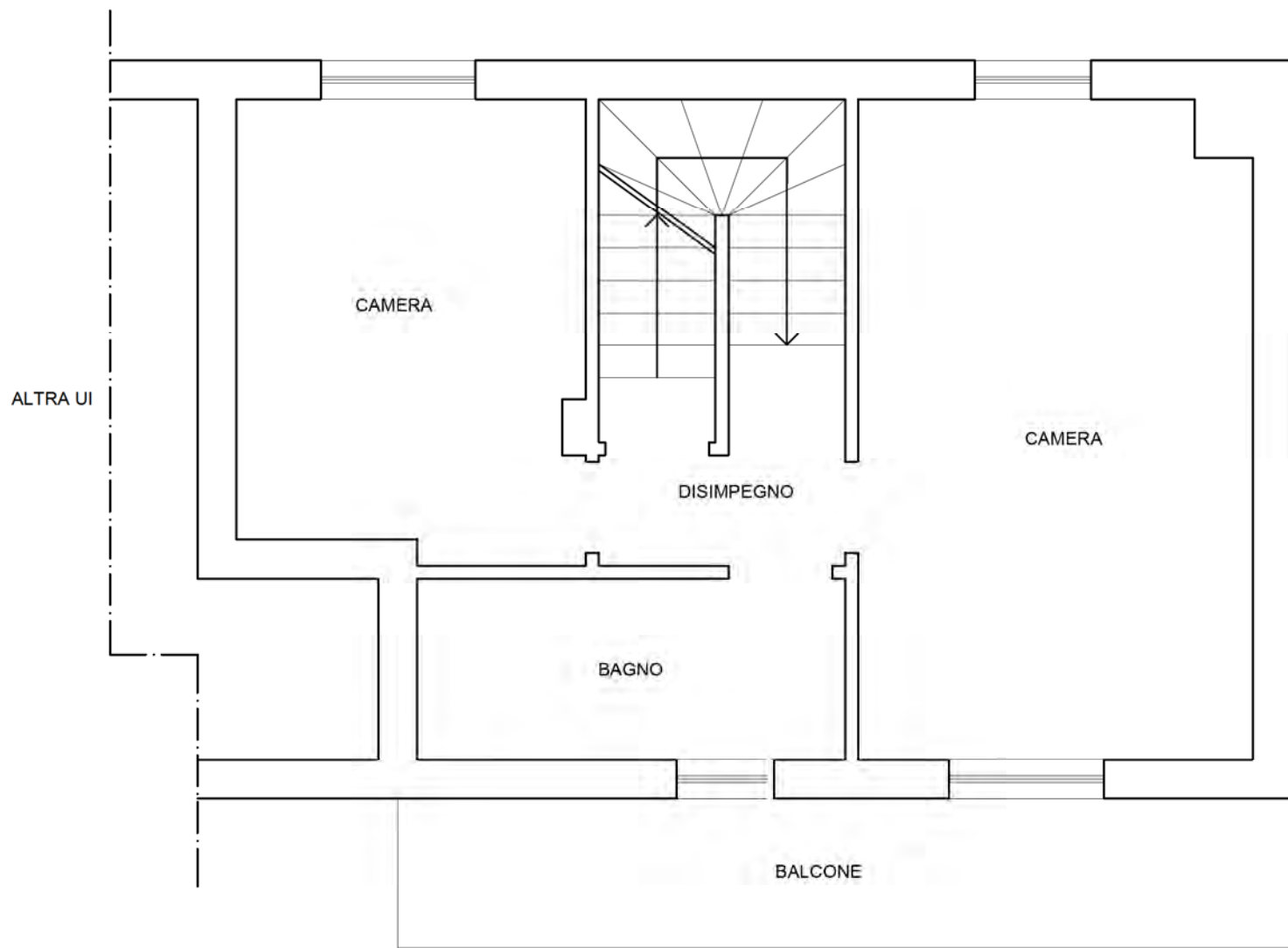


PLANIMETRIA PORZIONE DI BIFAMILIARE - PIANO SEMINTERRATO
INDIRIZZO: VIA GENERALE DELLA CHIESA N. 24 - MULAZZO (MS)
DATI CATASTALI: FG. 7, PART. 1525, SUB. 10

IL TECNICO
ING. LUCIA DRANDI



PIANO TERRA - H 270 cm



PIANO PRIMO - H 270 cm

