

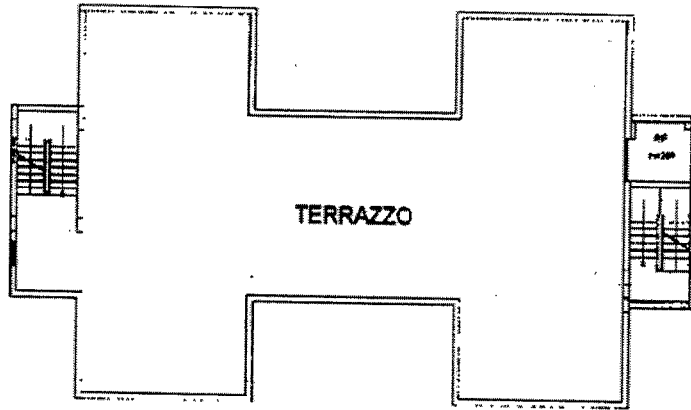
LEGENDA

- 1) CENTRO SERVIZI
- 2) LOCALE ANIMAZIONE
- 3) DOCCIA ESTERNA
- 4) LOCALE TECNICO PISCINA
- 5) PISCINA CENTRALE
- 6) PISCINA BAMBINI
- 7) CAMPO DA TENNIS
- 8) CAMPO DA PALLAVOLO
- 9) CAMPO DA CALCETTO

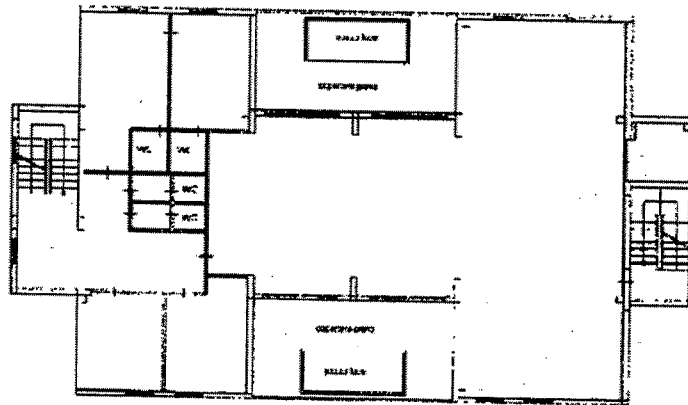
Tribunale Civile e Penale di Sciacca
 Proc.rim. n.3/98, 27/98,36/99, 41/99
 Allegato n. VII

NORD

Plan. Rif. n.1



PIANO SECONDO

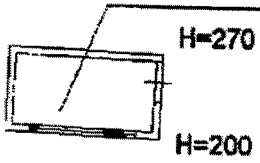


PIANO PRIMO H=310

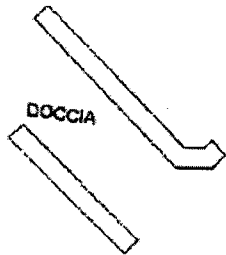
NORD



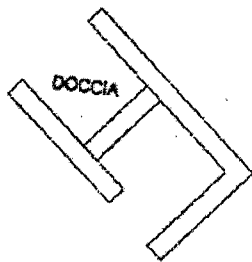
Locale animazione



Piano Terra
Rif. Plan. n.2

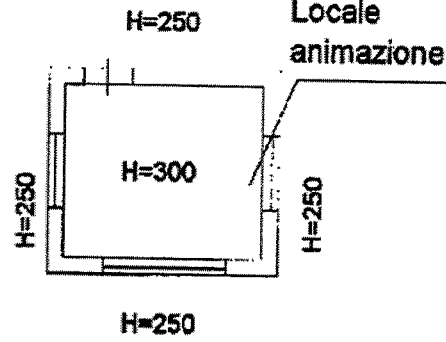


Piano Terra
Rif. Plan. n.3
DOCCIA ESTERNA
PRIVA DI COPERTURA

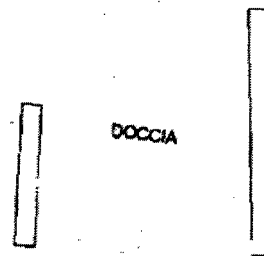


Piano Terra
Rif. Plan. n.3
DOCCIA ESTERNA
PRIVA DI COPERTURA

Locale animazione



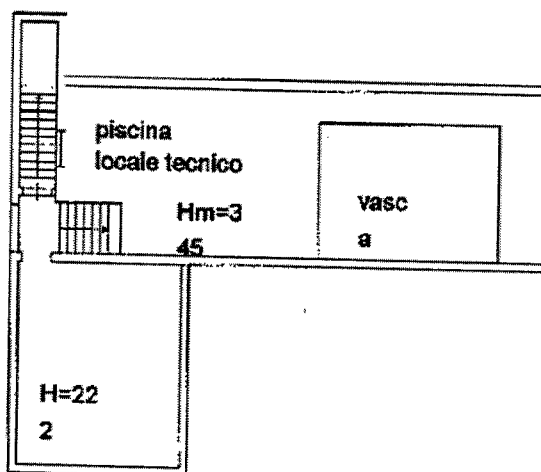
Piano Terra
Rif. Plan. n.2



Piano Terra
Rif. Plan. n.3
DOCCIA ESTERNA
PRIVA DI COPERTURA

Nord





Piano primo sottostrada

Rif. Plan. n.4

NORD