

PROSPETTO VIA DON L. STURZO



CORTE CONDOMINIALE

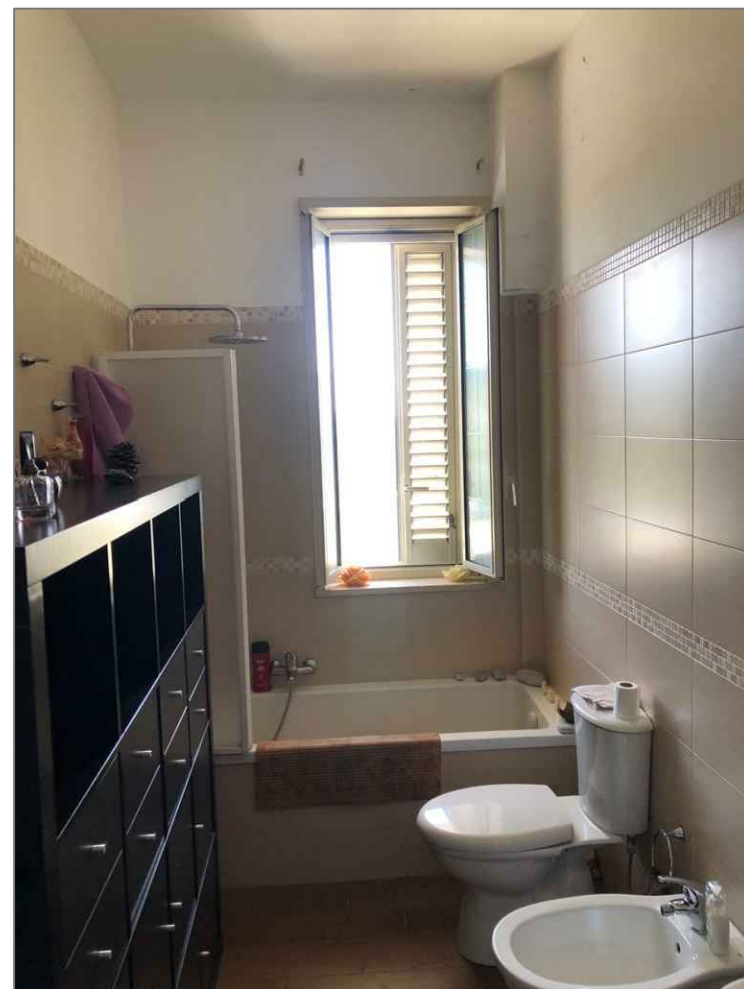


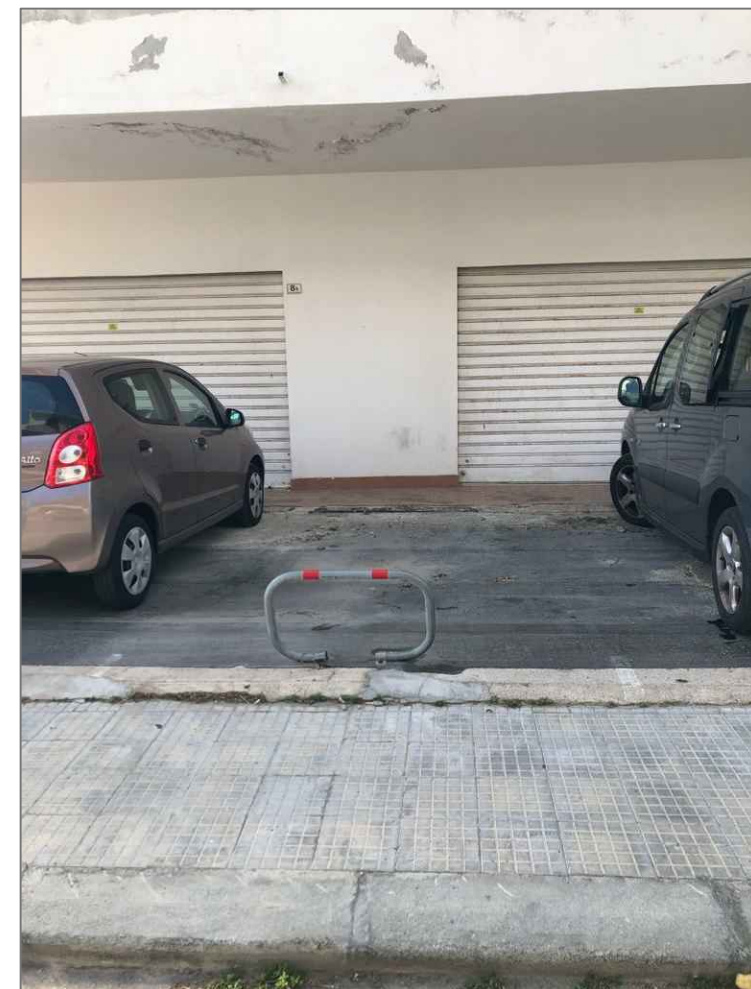
FOTO 3 - BAGNO



FOTO 6 - RIPOSTIGLIO



LASTRICO SOLARE SUB 22



POSTO AUTO SUB 40

PIANTA PIANO SECONDO SUB 15

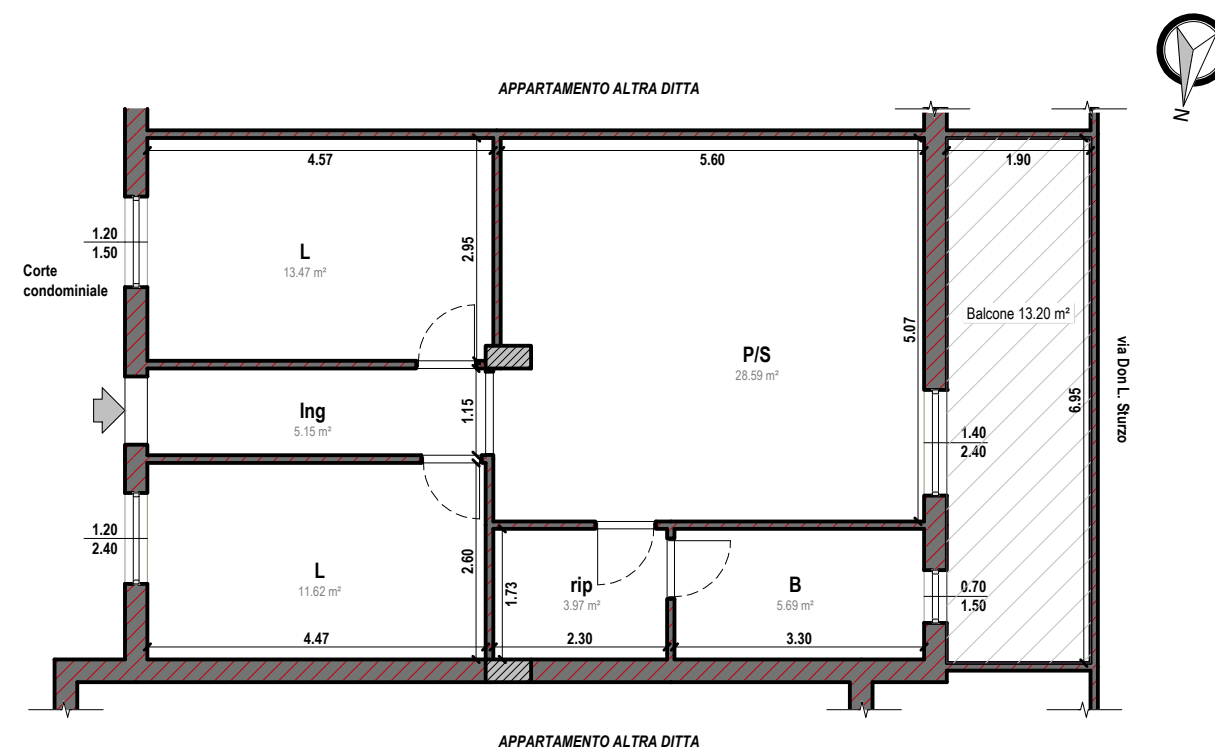


FOTO 1 - SOGGIORNO



FOTO 2 - CAMERA LETTO

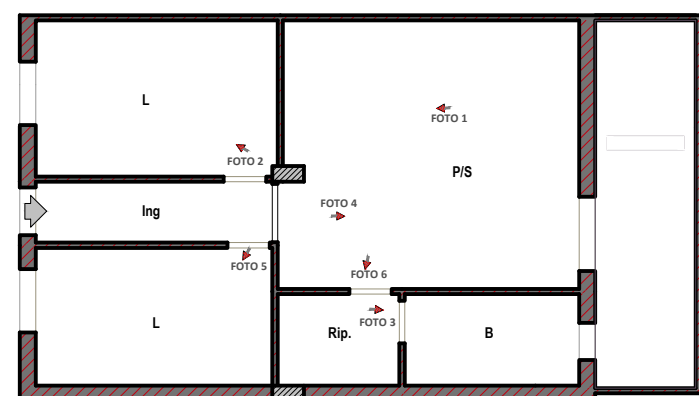


FOTO 4 - SOGGIORNO



FOTO 5 - CAMERA LETTO

Punti di scatto



Superficie lorda
86,68 mq

Superficie utile
73,57 mq