

LASTRICO SOLARE



FOTO 2 - INGRESSO COMUNE



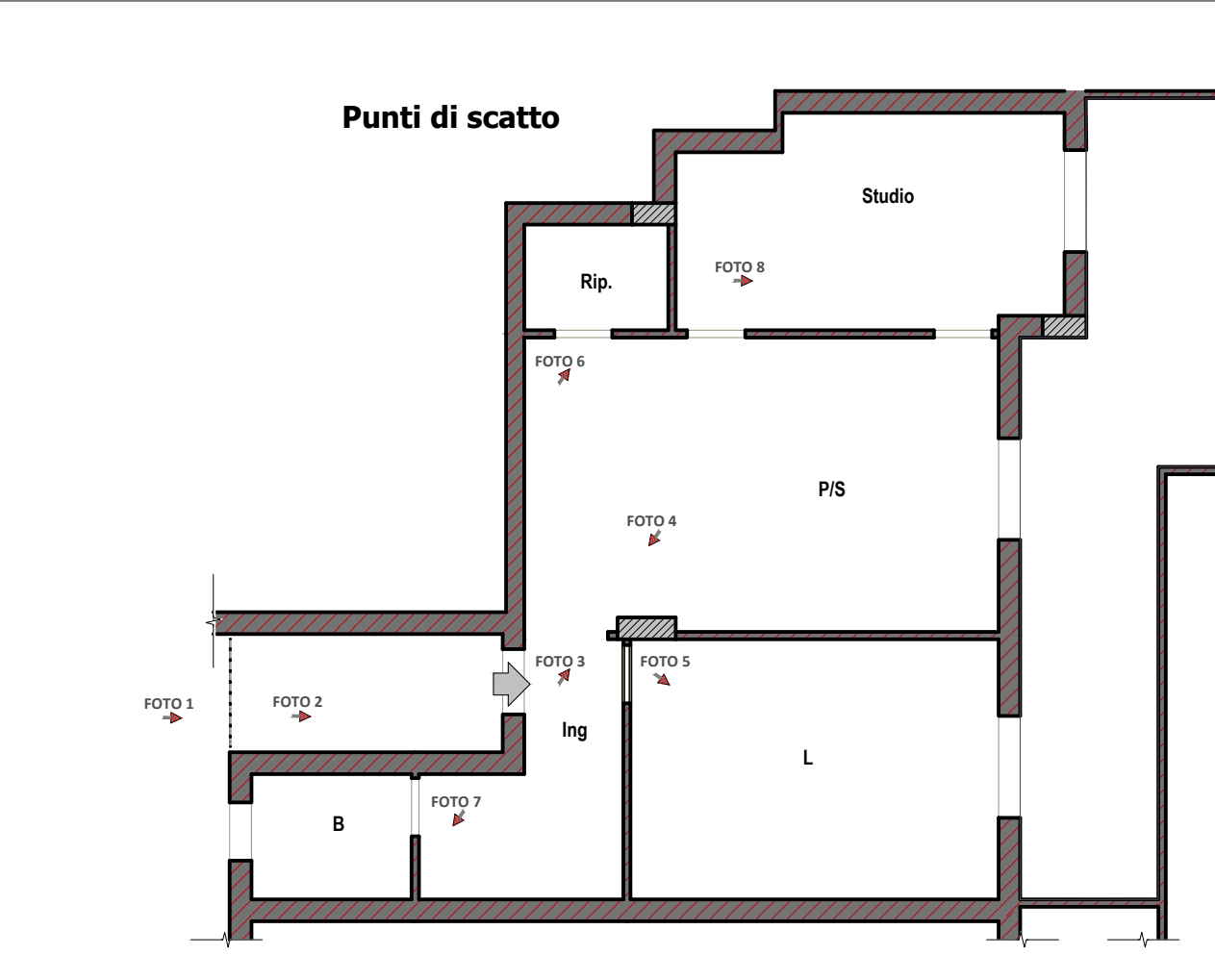
FOTO 3 - INGRESSO



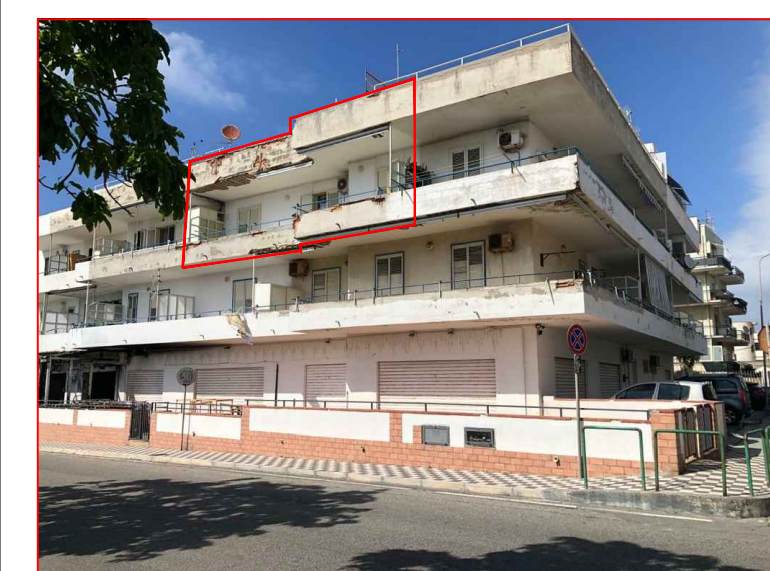
FOTO 6 - RIPOSTIGLIO



FOTO 7 - BAGNO



Punti di scatto



PROSPETTO VIA DON L. STURZO

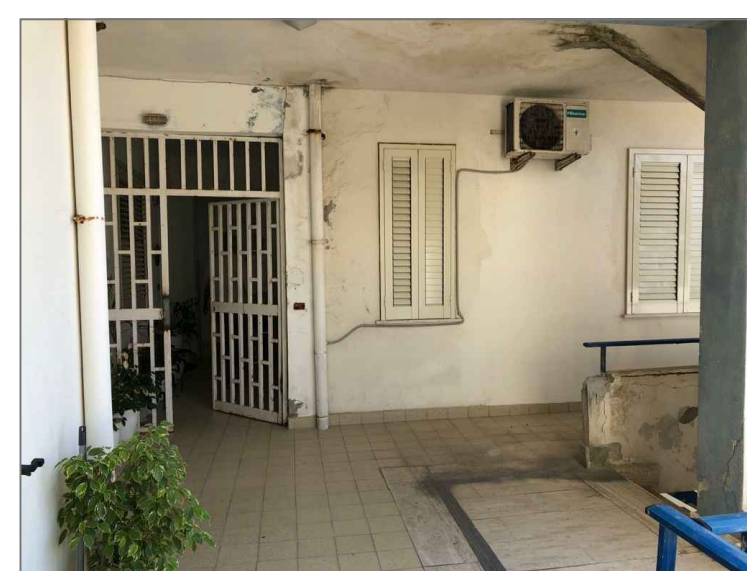


FOTO 1 - SPAZIO COMUNE



FOTO 4 - INGRESSO

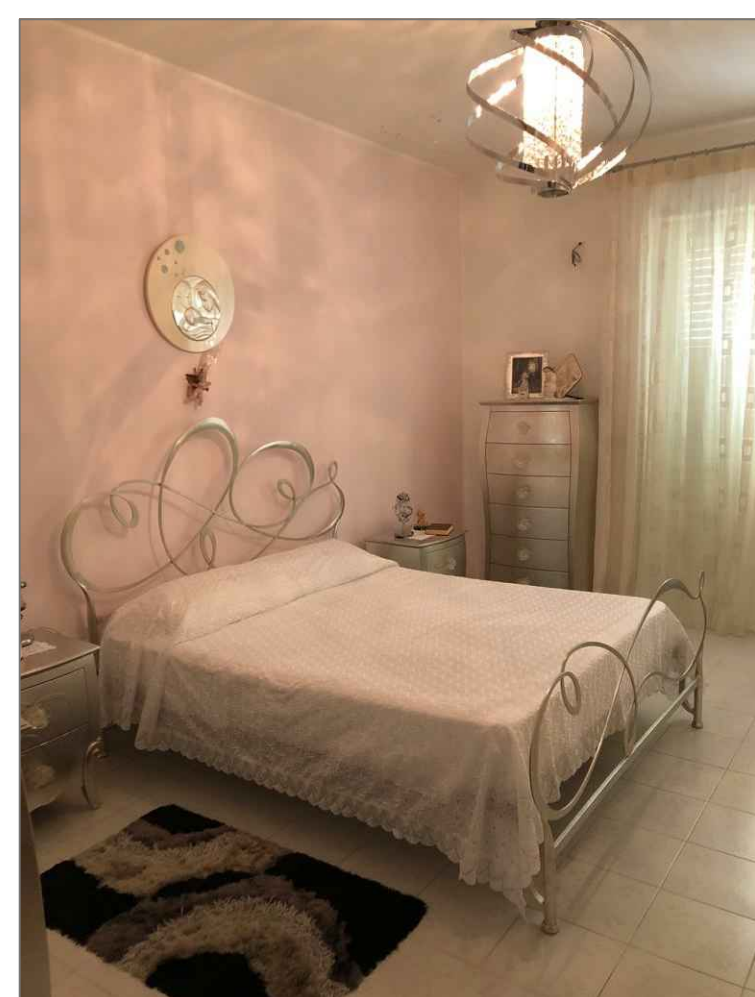


FOTO 5 - CAMERA LETTO

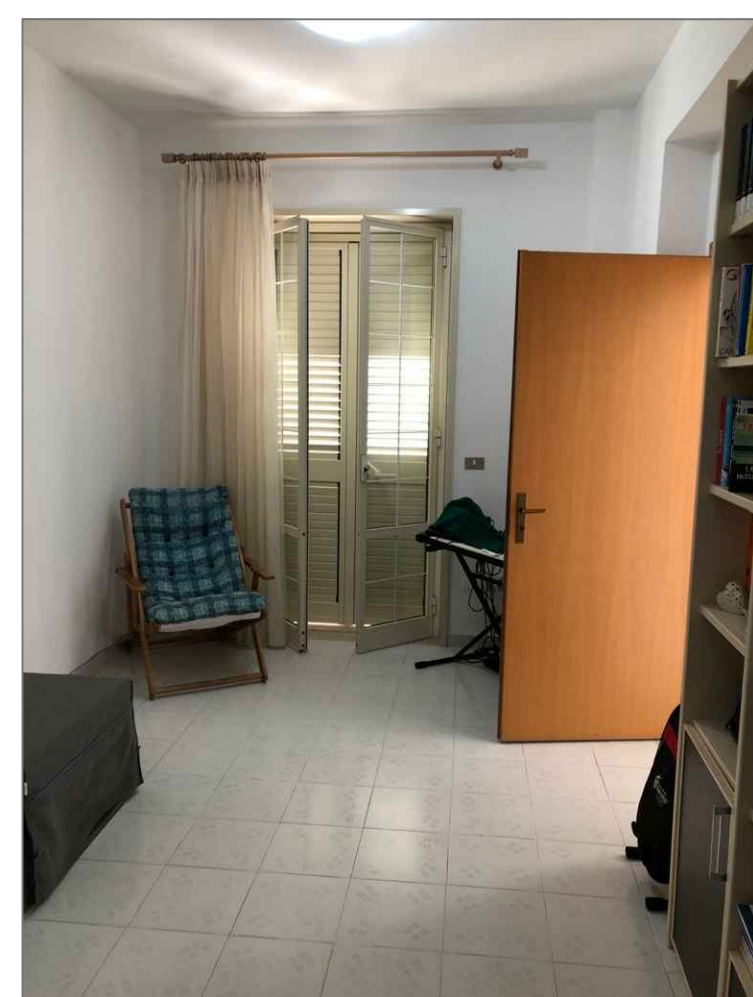


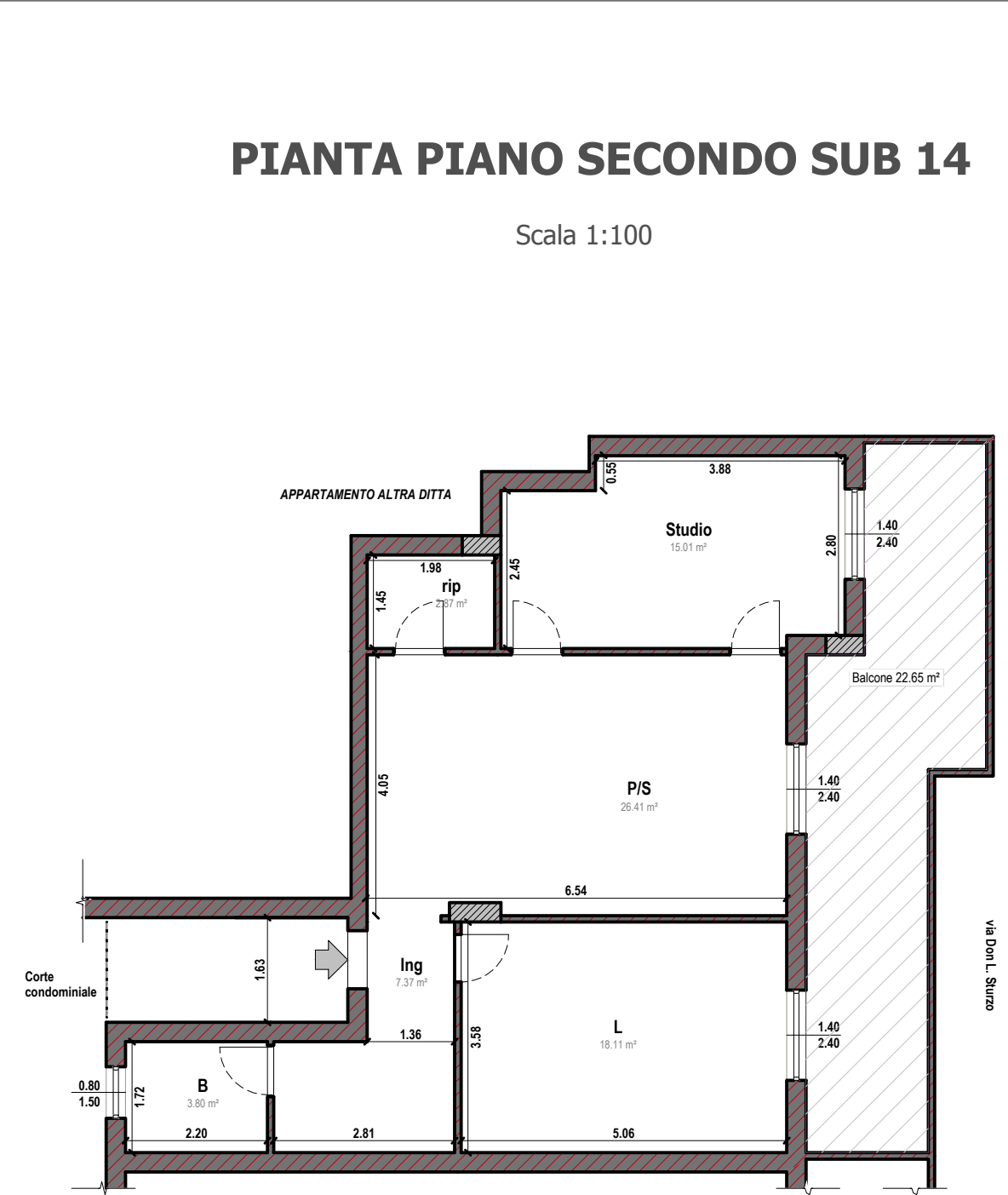
FOTO 8 - STUDIO



BALCONE VIA DON L. STURZO



BALCONE VIA DON L. STURZO



PIANTA PIANO SECONDO SUB 14

Scala 1:100

Superficie lorda
86,68 mq

Superficie utile
73,57 mq