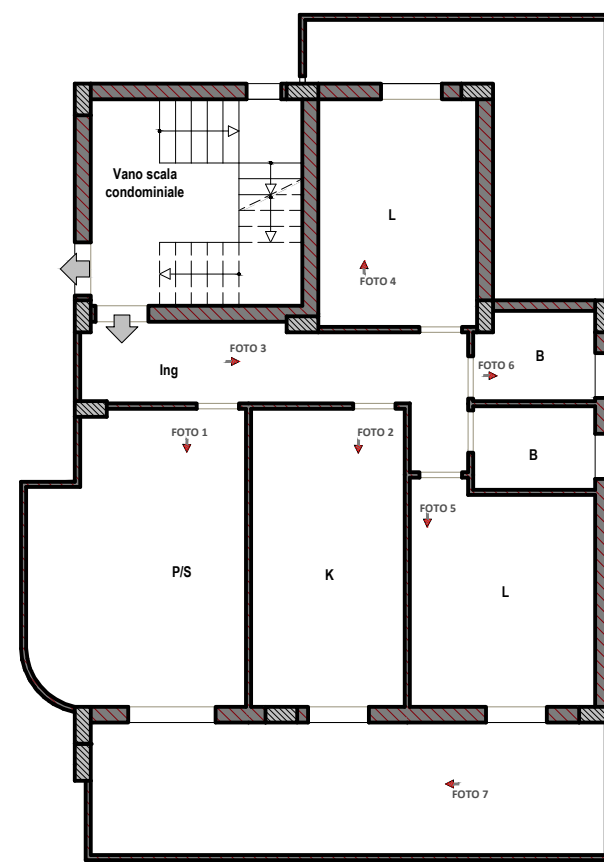


Punti di scatto



PROSPETTO CORTILE INTERNO



INGRESSO ESTERNO



FOTO 1 - SOGGIORNO

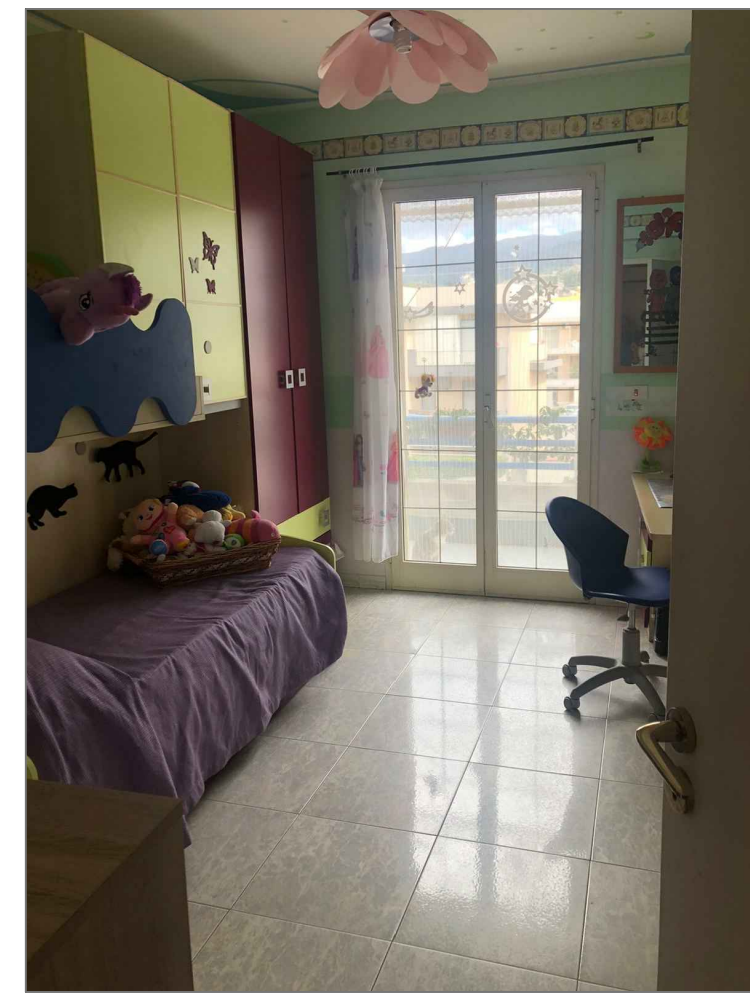


FOTO 4 - CAMERA LETTO

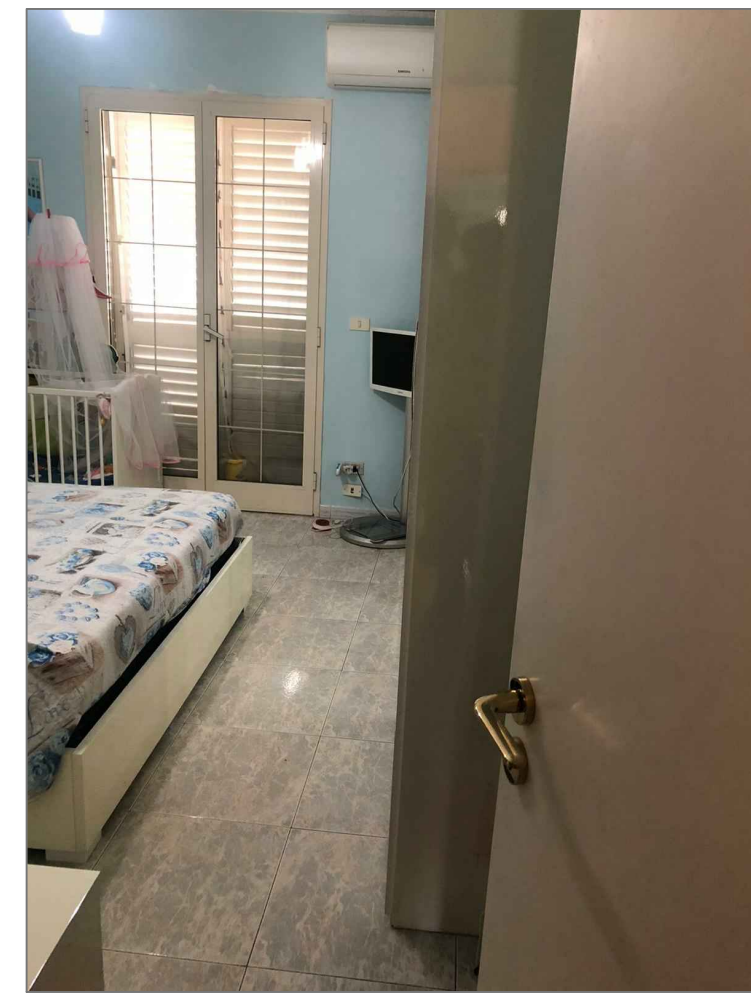
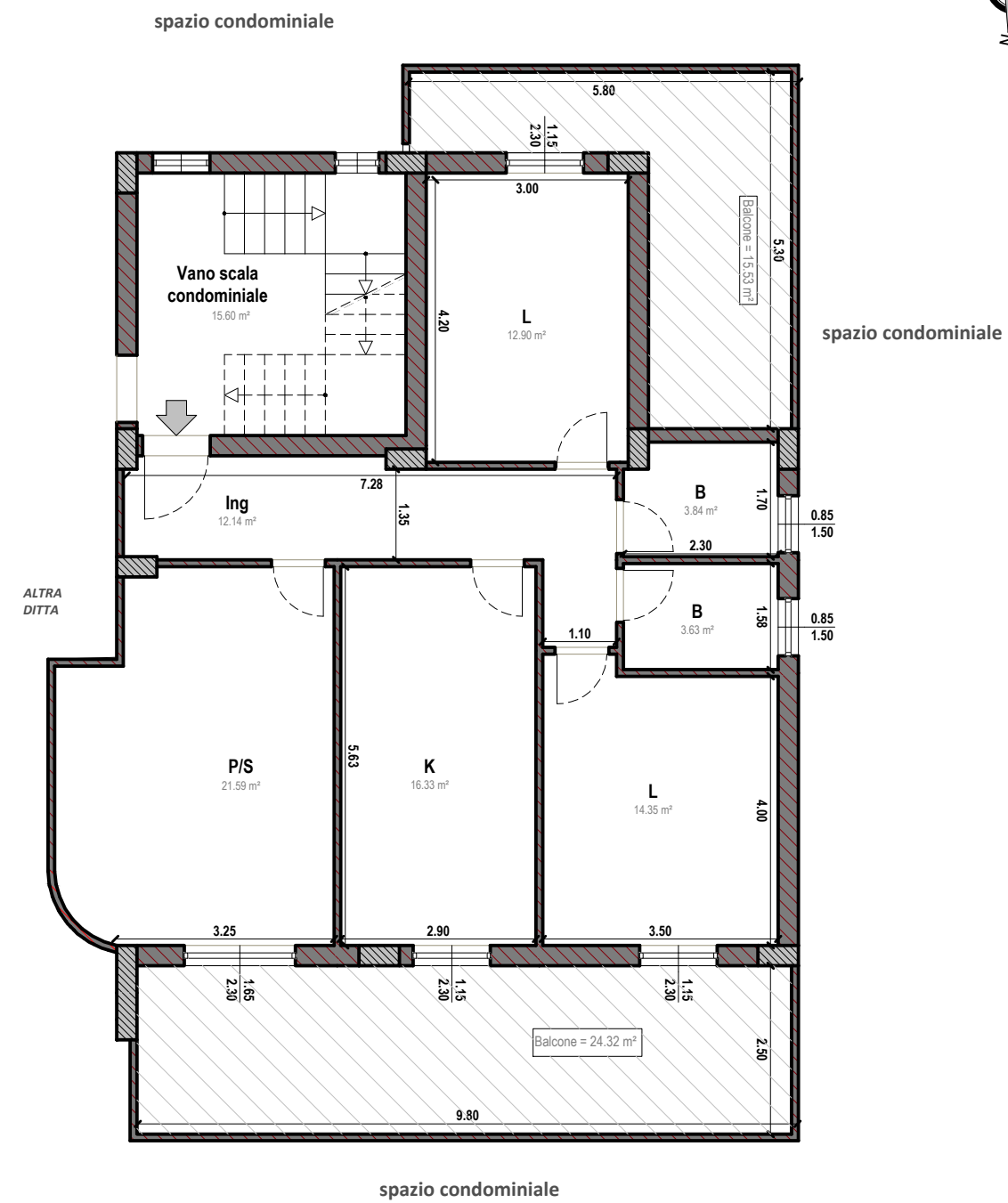


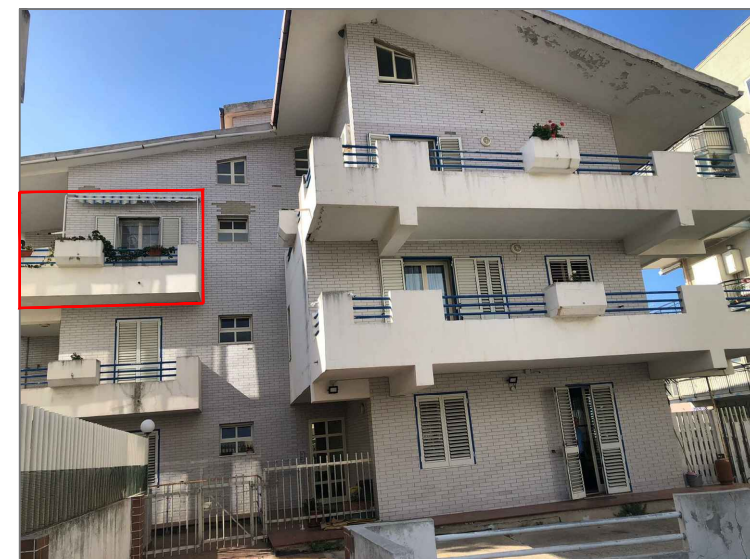
FOTO 5 - CAMERA LETTO

PIANTA PIANO SECONDO SUB 48
scala 1:100



Superficie lorda:
97,41 m

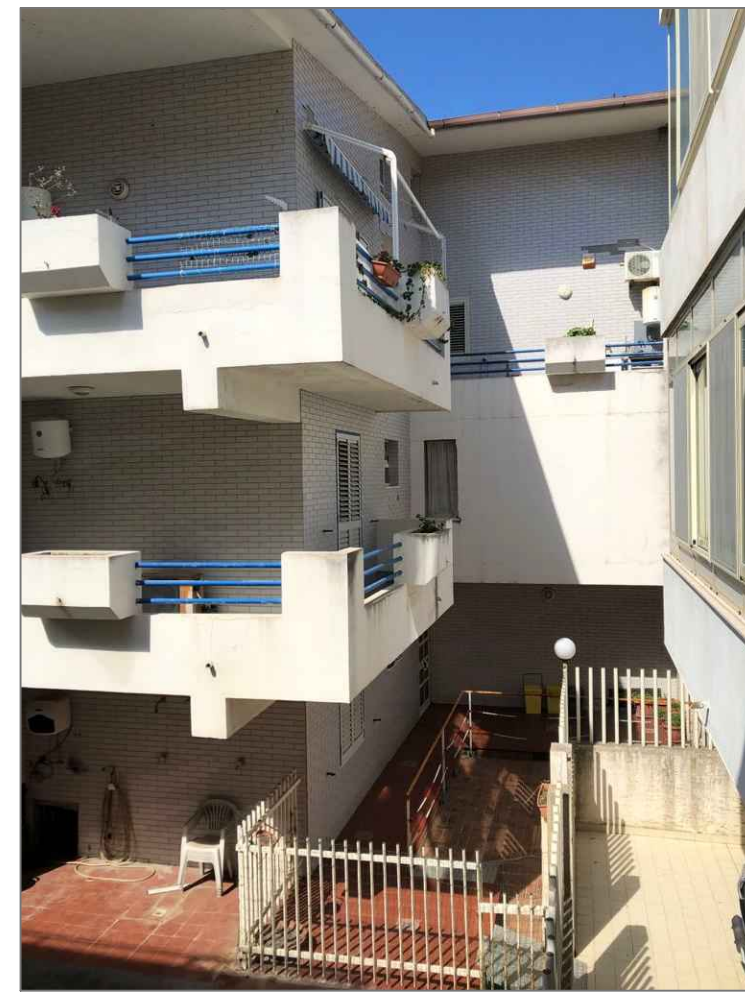
Superficie utile:
84,65 m



PROSPETTO VIA A. VIVALDI



PROSPETTO LUNGOMARE



PROSPETTO CORTILE INTERNO

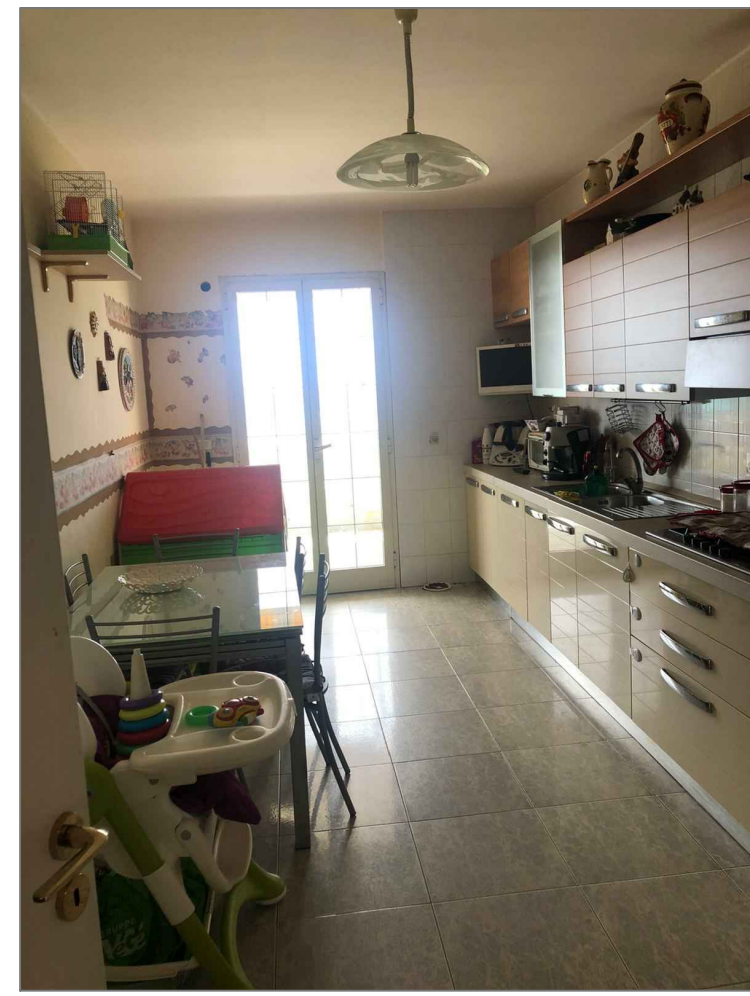


FOTO 2 - CUCINA

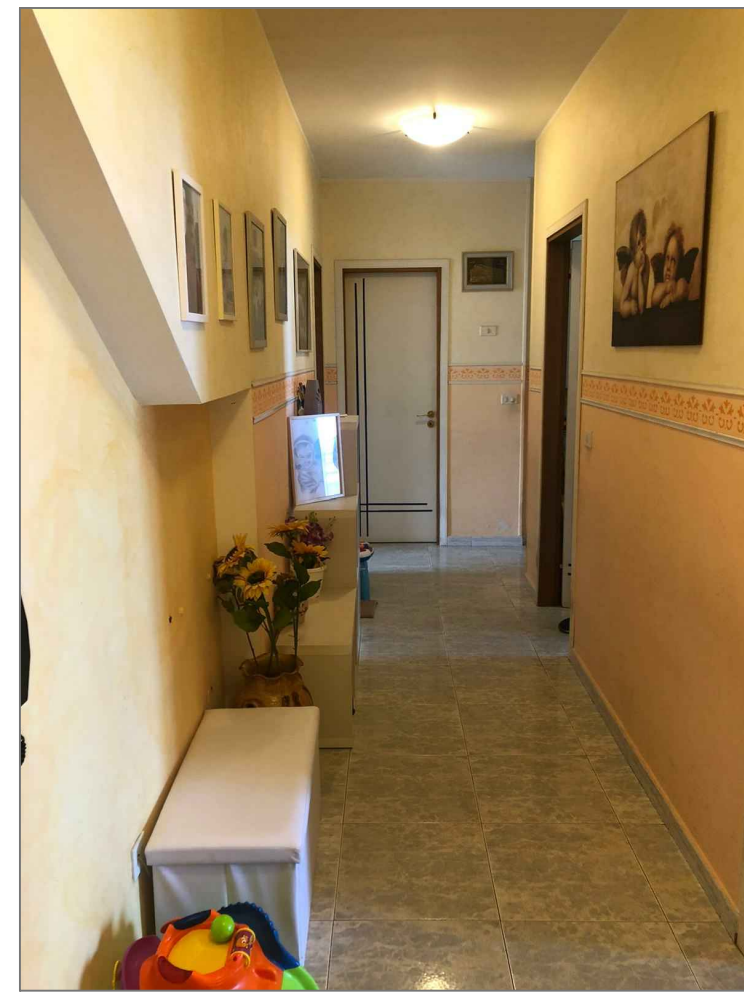


FOTO 3 - INGRESSO

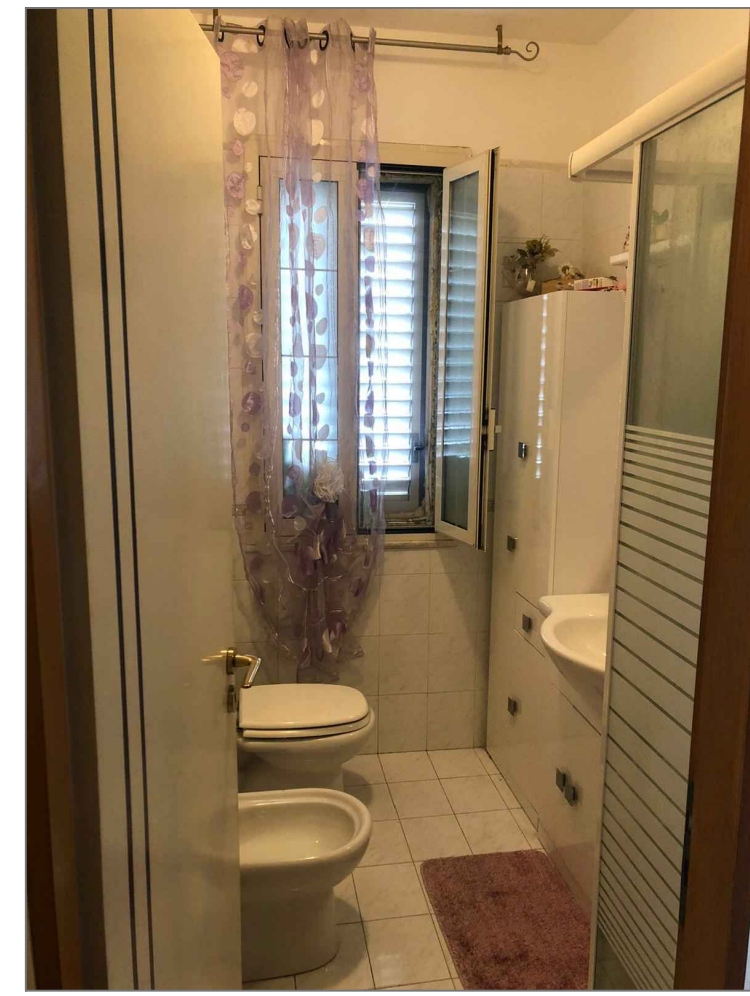


FOTO 6 - BAGNO



FOTO 7 - BALCONE