

*RILIEVO FOTOGRAFICO*

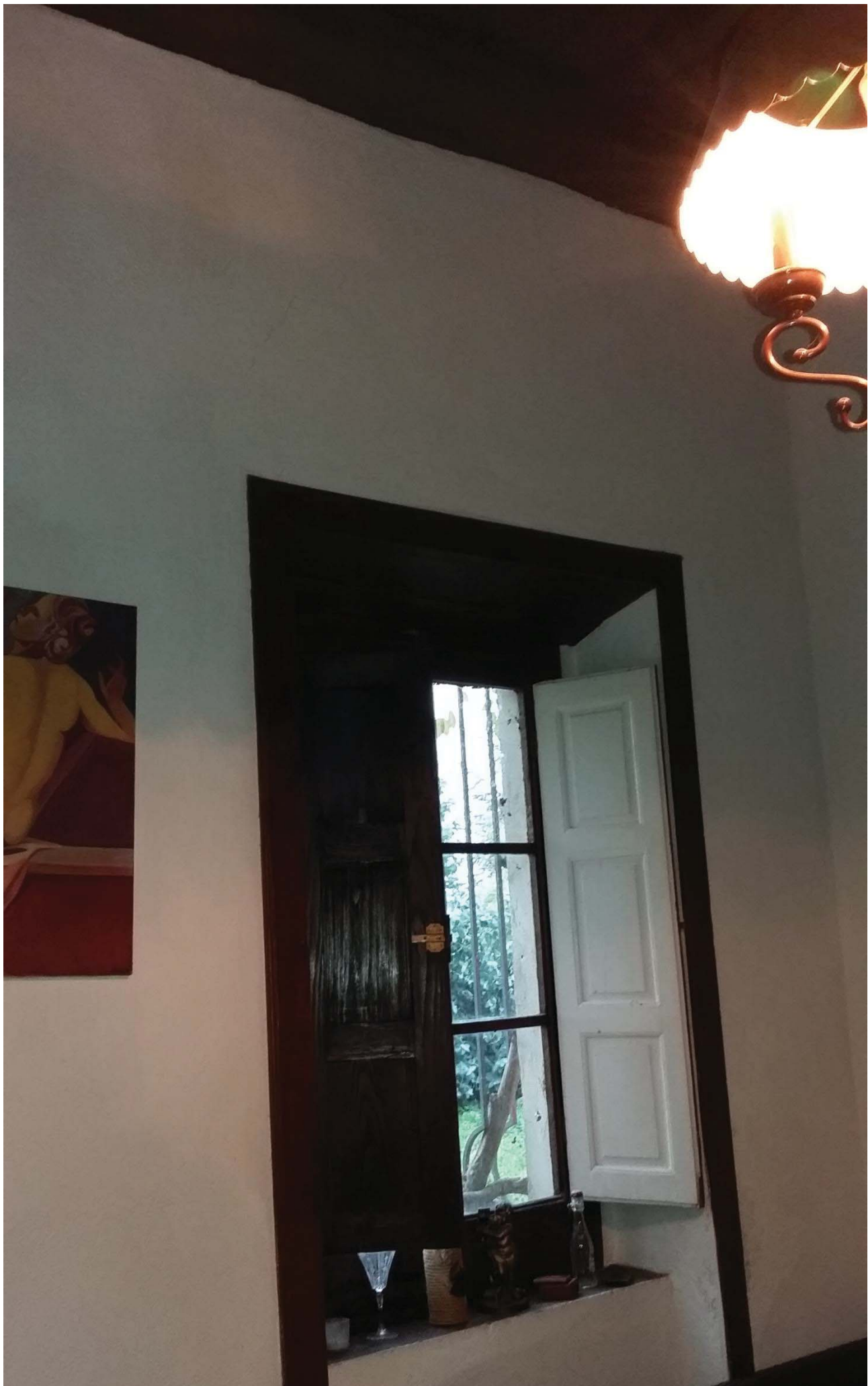
*RILIEVO FOTOGRAFICO*

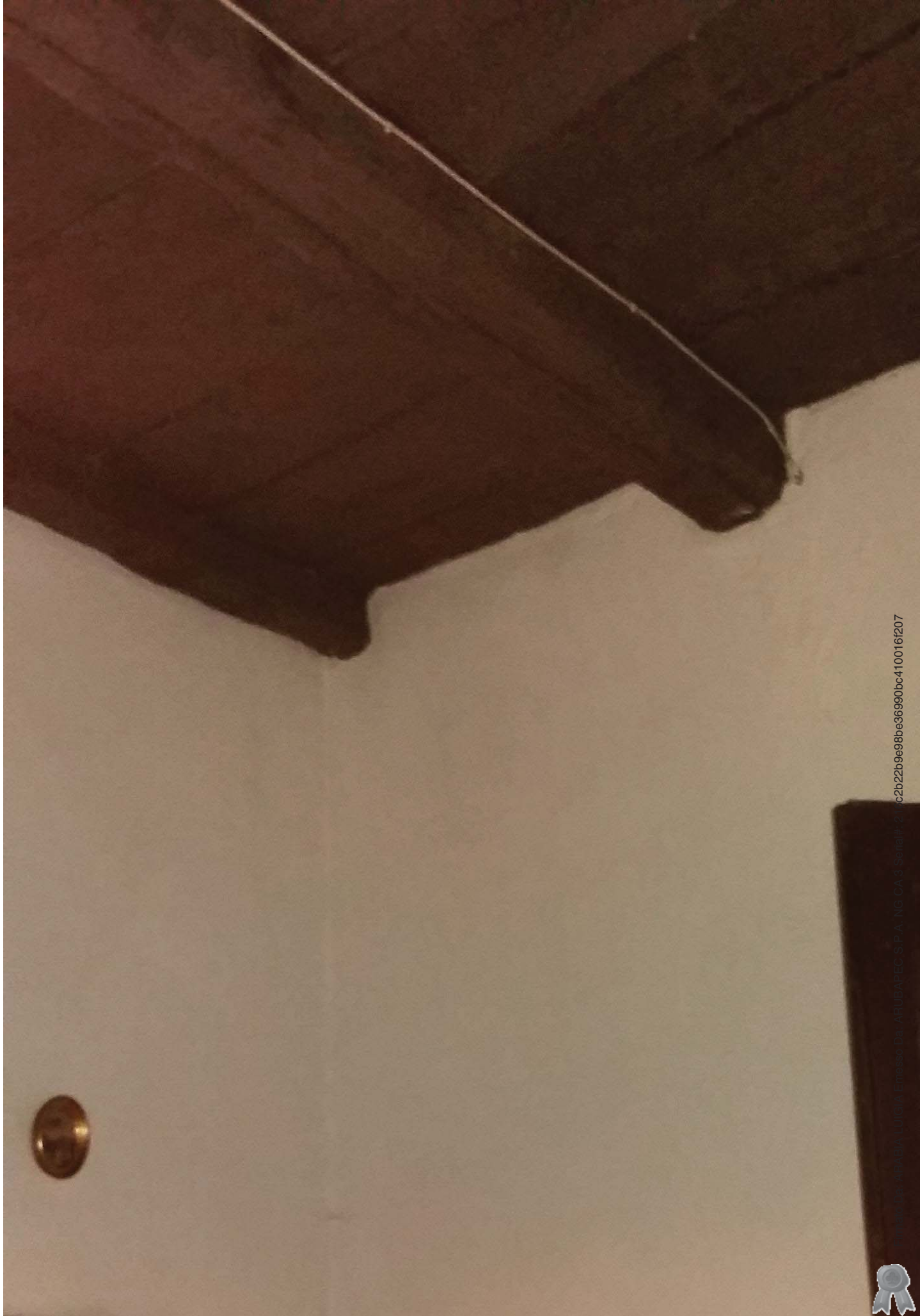




All . 14 corpo A







c2b22b9e98be36990bc410016f207

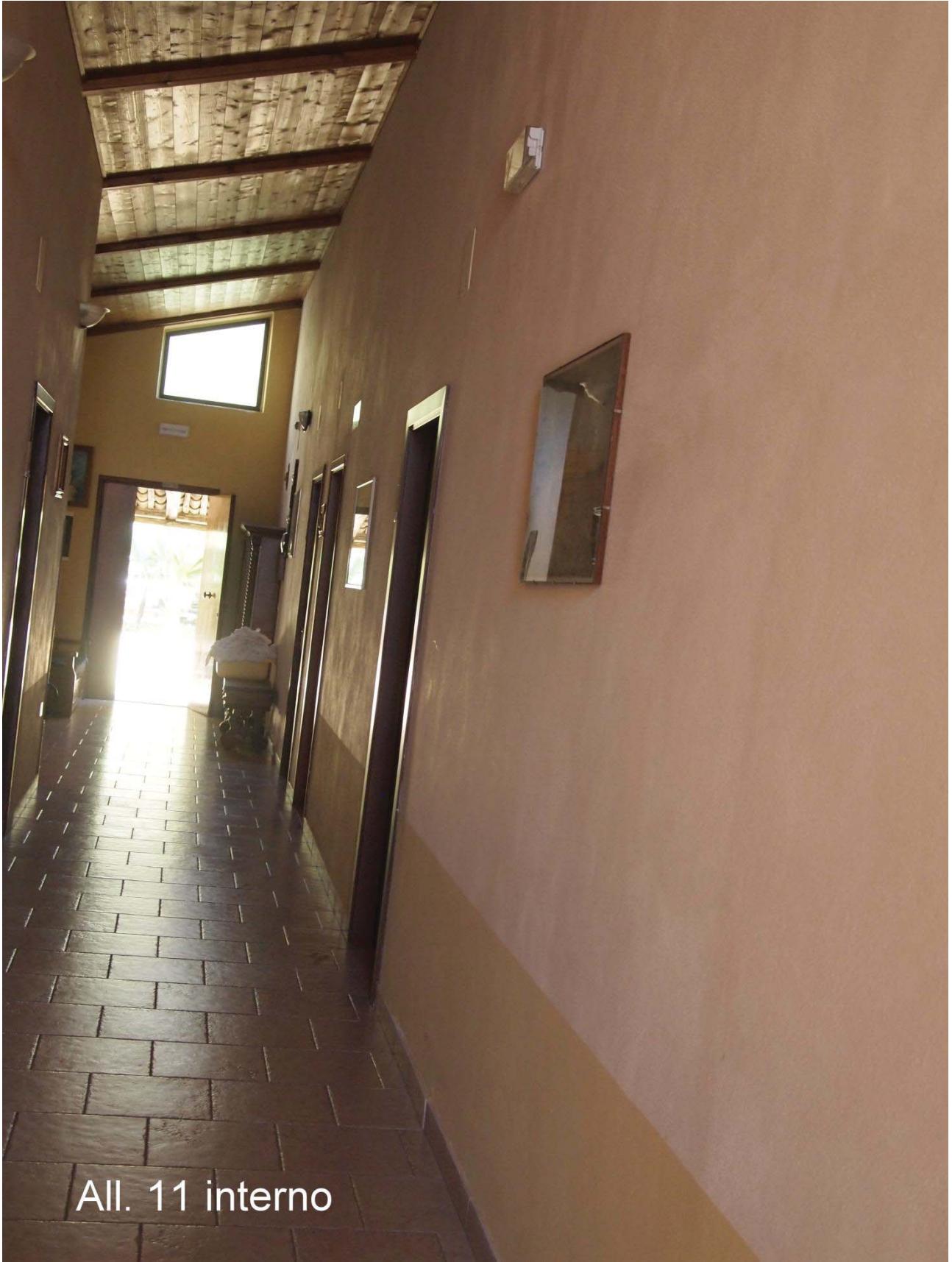
COMPTON ITALIA S.P.A. - VIA CA' S. GIUSEPPE, 10 - 00187 ROMA (RM) - ITALIA











All. 11 interno









All. 9 particolare soffitto alloggi





all. 8 corpo B





All. 4 Particolare soffitto





Firmato Da: ARABIA LUISIA Emesso Da: ARUBAPEC S.P.A. NG-CA 3 Serial#: 216c2b22b9e98be36990bc4100161207





All. 2 sala ristorante





All. 2 sala ristorante





All. 4 Particolare soffitto





